

Free  
Winterize!  
See ad for  
details

# 2025 Model Introduction Sale

7.99%  
RATE  
SPECIAL

**PREMIER**  
LLC



Mon-Fri 9-5  
Sat: 9-4:30

**FINAL CLEARANCE OF REMAINING 2024 MODELS!**

*"It's great to be back in the RV Industry with this team!!"*

*Brad and Brandy Thompson*



over 400 years of RV experience

**INTEREST RATES ARE DROPPING!  
GAS PRICES ARE DROPPING!**

**IT'S TIME TO START LOOKING  
FOR YOUR NEW RV!**

RV BUSINESS

**TOP 50**

DEALER AWARDS

## PREMIER RV - WHAT CUSTOMERS WANT AND DESERVE

- ✓ Premier RV named RVDA Top 50 dealers in the Nation!
- ✓ Quality Brands at volume discounted prices
- ✓ No pressure, transparent sales process
- ✓ Expertise - family owned with over 400 years of RV experience
- ✓ Best Reputation - Better Business Bureau A+ Rating & 4.9 Google Rating

746 Industrial Drive, Blue Grass, Iowa 52726 • 563-424-7788 • [www.premierrv.com](http://www.premierrv.com)

Not responsible for printing errors.

[Facebook.com/PremierRVIowa](https://www.facebook.com/PremierRVIowa)



# Thompsons Continue the Family Legacy with Premier RV

ADVERTORIAL — Brad Thompson is no stranger to selling RVs. In fact, it's been a part of his life since he was a child. Brad's parents, Jim and Darlene Thompson, owned and operated an RV dealership for decades before passing ownership on to Brad and his four siblings. The siblings, Mark (Dawn) Thompson, Tim (Brenda Thompson), Jill (Larry) Tappendorf, and Ann (Paul) Thorndyke sold the business seven years ago. Brad and his wife, Brandy, decided they weren't finished with the RV industry. In October 2021, the couple opened up their own dealership, Premier RV, in Blue Grass. The company prides itself on offering customer care that can't be found at the big box dealers. "We came up with a model when we started of what customers want & deserve. Every decision, we have that in mind," Thompson said.

Culture is important to the Thompsons, which led them to bring on many people who worked for their previous business. Nearly 80% of their current staff also worked at the previous family dealership. The team collectively has over 400 years of RV industry experience.



Premier RV team

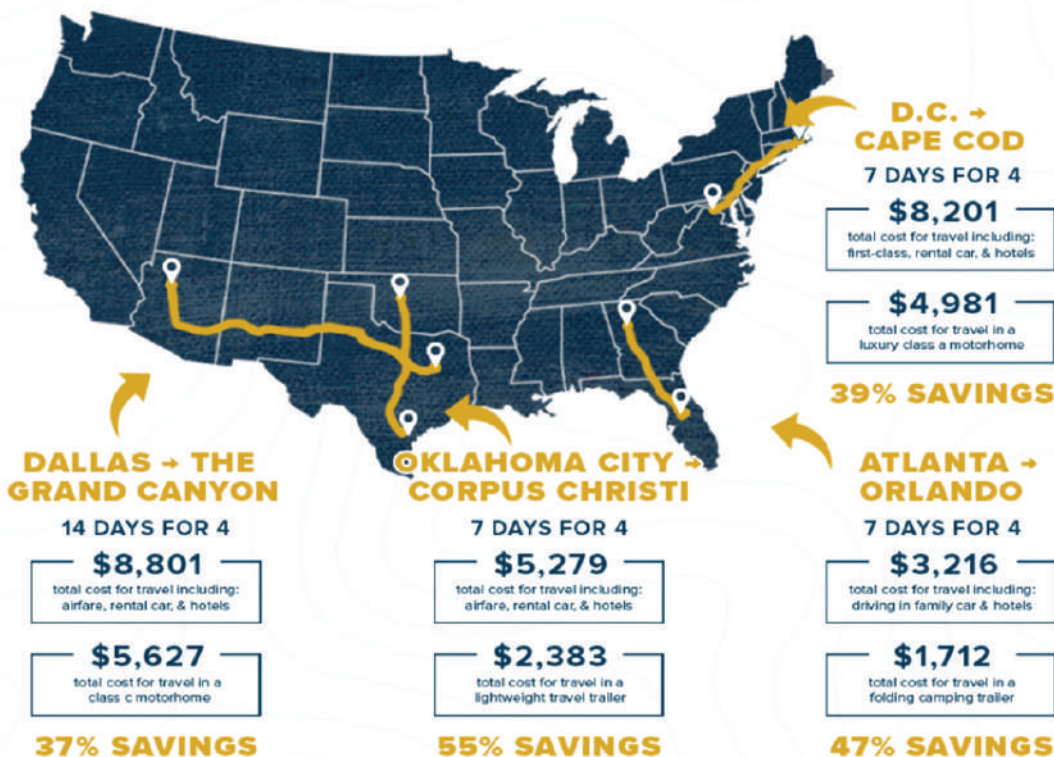


We predetermine our lowest possible selling price and post it on selected RV models. It enables our sales team to spend more time focusing on the needs of our guests. Our prices are based on inventory levels, market analysis, huge volume discounts, and fully prepped out RVs with full factory warranties, all at the lowest prices possible. This means NO haggling, gimmicks, high pressure, "make me an offer," "today only," or back and forth to management; just a stress free way to buy. Trade-ins would be gladly accepted on Super Value priced units at market values.

## VACATION COST COMPARISON STUDY

RV INDUSTRY  
ASSOCIATION

FOR A GROUP OF 4 PEOPLE RVING





# 2024 Liquidation



2023 Venture Sporttrek  
Touring STT302VRB  
- Rear Bath, 2 Slides  
#1681

**\$41,891**

**\*\*\$340**  
per month



2024 Venture Sporttrek  
Touring STT343VIK  
- Rear Living, 3 Slides  
#1804

**\$49,991**

**\*\*\$406**  
per month



2024 K-Z Connect  
C302RBK - Rear Bath,  
2 Slides  
#1810

**\$34,871**

**\*\*\$283**  
per month



2024 K-Z Sportsmen SE  
241RKSE - Rear Kitchen,  
1 Slide #1883, #1884,  
#1885, #1886

**\$25,991**

**\*\*\$211**  
per month



2024 K-Z Sportsmen  
Classic 191BHK  
- Bunkhouse, 1 Slide  
#1887, #1889, #1890

**\$16,481**

**\*\*\$152**  
per month



2024 Venture Sporttrek  
ST251VFK - Front  
Kitchen, 1 Slide  
#1960, #1961

**\$32,991**

**\*\*\$268**  
per month



2024 Ember E-Series  
22ETS- Bunkhouse,  
1 Slide  
#2025, #2026

**\$29,891**

**\*\*\$243**  
per month



2024 Ember E-Series  
22MLQ- Rear Kitchen,  
1 Slide  
#2023, #2024

**\$28,891**

**\*\*\$235**  
per month



2024 Starcraft Super  
Lite 233ML  
- Rear Kitchen, 1 Slide  
#2008, #2009

**\$29,991**

**\*\*\$243**  
per month



2024 K-Z Connect  
C41RLK- Rear Living,  
1 Slide  
#1825

**\$27,891**

**\*\*\$226**  
per month



2024 Keystone Bullet  
Crossfire 2530RD  
- Rear Living, 1 Slide  
#2071

**\$28,891**

**\*\*\$235**  
per month



2024 Keystone Sprinter  
35BH- Bunkhouse,  
3 Slides  
#2177, #2178

**\$48,991**

**\*\*\*\$397**  
per month



2024 Keystone Sprinter  
Limited 3810QBS  
- Bunkhouse, 4 Slides  
#1851

**\$59,991**

**\*\*\$426**  
per month



2024 Keystone Arcadia  
Super Lite 294SLRD  
- 3 Slide, Rear  
Entertainment #1856

**\$44,991**

**\*\*\$365**  
per month



2024 Venture Sporttrek  
Touring STTF353VIK  
- 3 Slide, Rear Living  
#2104, #2269

**\$69,991**

**\*\*\$497**  
per month



2024 Brinkley Model  
Z 3110- 3 Slide,  
Bunkhouse  
#2165

**\$86,995**

**\*\*\$618**  
per month

# Premier is proud to announce Forest River Salem Trailers into its family



**FOREST RIVER**

## Salem FSX



174DBLE est 3000lbs

**\$14,991** **\*\*\$139** per month



162View 4659lbs

**\$25,991** **\*\*\$229** per month



169RSKX 4274lbs

**\$25,991** **\*\*\$229** per month



178BHSKX 4194lbs

**\$25,991**

(aluminum \$23,991 \$209)

## Salem Cruise Lite/Salem



24RLXL 5063lbs

**\$27,991** **\*\*\$249** per month

**Order in Nov**



25ICE est 6200lbs

**\$26,991** **\*\*\$239** per month



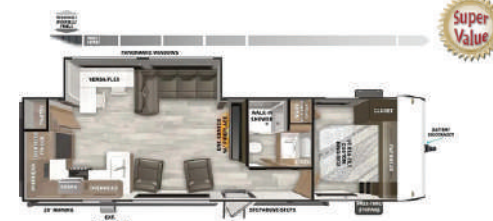
22Veranda 8143lbs

**\$36,991** **\*\*\$344** per month



26ICE 6288lbs

**\$25,891** **\*\*\$227** per month



27RK 6863lbs

**\$30,991** **\*\*\$275** per month



28VBXL 6208lbs

**\$28,991** **\*\*\$259** per month



29VIEW 8001lbs

**\$39,995** **\*\*\$375** per month



32Veranda 8993lbs

**\$41,999** **\*\*\$399** per month





# 2025 Sportsmen Classic/SE



## 2025 Sportsmen SE Advantages over the Competition

- Made by Thor Industries- #1 manufacturer of RVs in the World
- Lumber Core Style Cabinetry vs competition pressboard
- Forced Air Heated Underbelly with insulated floor vs competitions only enclosed underbelly no insulated floor
- True 2x2 studded walls and roof trusses on 16" center vs competitions 1 1/2" walls
- Fiberglass wall insulation glued in place allowing it not to settle and cause insulations gaps
- 500 pound weight rated on double bunks (cargo/sleeping)
- More windows that open in most models vs the competition
- Full bedroom wall with sliding door on most bunk models versus competitions curtains
- 80 pound cabinet drawer ratings
- Gas furnace standard
- Larger exterior storage doors
- Magnetic Catches for Baggage Doors
- Battery Disconnect Switch

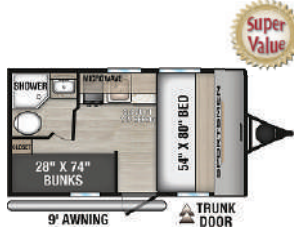


Sportsmen 130RB

2,190 lbs.

**\$12,991**

**\*\$129**  
per month



130BH  
2580 lbs

**\$12,991**

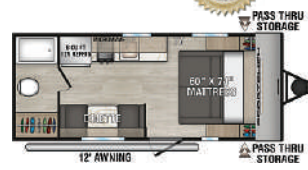
**\*\*\$129**  
per month



130RD  
2570 lbs

**\$12,991**

**\*\*\$129**  
per month



170MB est  
3000 lbs

**\$14,991**

**\*\*\$139**  
per month

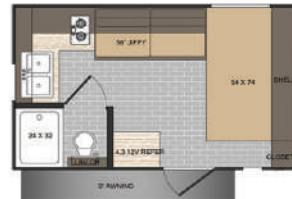


261BHKSE  
6270 lbs

**\$26,991**

**\*\*\$248**  
per month

## 2025 Sunset Park Trailers



**\$13,991**

2024 Sunlite LTD 13MJ  
2,460 lbs.

**\*\$135**  
per month



**\$13,991**

Sunlite LTD 13BD  
2,380 lbs.

**\*\$135**  
per month



Sunray 149  
2,260 lbs.

**\$14,991**

**\*\$149**  
per month



**\$16,991**

Sunlite 16BH  
2,650 lbs.

**\*\$175**  
per month



**\$15,991**

Sunlite LTD 19RK  
2,880 lbs.

**\*\$164**  
per month

# 2025 Starcraft Autumn Ridge



Most with fiberglass exterior, TV, enclosed heated underbelly + 3 yr. structural warranty



188BHS fiberglass exterior 4245lbs

**\$19,981** \*\*\$179 per month



26BH 5895lbs

**\$19,991** \*\*\$182 per month



27BHP

**\$27,991** \*\*\$240 per month



Starcraft Autumn Ridge 26BHS 5,810 lbs.

**\$23,991** \*\*\$209 per month



## Introducing Sienna by Venture RV



Sienna 231VRK 5,850lbs

**\$29,991**



Sienna 293VIK 8,510lbs

**\$39,991**



## 2025 Starcraft Autumn Ridge Advantages

- 2 – 30# lp tanks vs competitions 20# (dual axle models)
- Every window opens vs competitions any Port windows
  - All windows are tinted and safety glass
  - Window in the entry door
  - Upgraded wooden trim around windows with top valance
- All large slideouts are flush floor and use linoleum vs competition carpet
- Xtend Solar I Package: 200 watt solar panel with 30 amp controller
- More cabinets than any of our competition in like floor plans
  - Modern hardware, strong-hold latches, and no-slip lips in all the cabinets enhance convenience.
  - Large bathroom medicine cabinets vs competition no storage mirror (dual axle models)
  - Most bathroom counter space and cabinet space then the competitions
  - at least 2 drawers in every kitchen Starcraft builds
  - Solid master bedroom doors vs competition curtains (26BH model has half wall with others are open)
  - Large mirrored bedroom wardrobe closets with nightstands with outlets/chargers
  - Decorative front bedroom wall panel
- large single-basin sink (stainless steel on dual axle models) and sleek pressed membrane countertops vs competition small bowl
- Large 10.2 cubic Everchill 12V refrigerators with doors that swing either direction
- Decorative kitchen backsplash vs competitions wall board
- 40" wide dinette vs competition 32"
- Heaviest Rated bunks in the industry- Single bunks are a 300# Rating Double bunks are 600#
- Front queen bed have plywood base with struts – storage underneath is separated from exterior storage to keep dirt out
- Premium main bed comforter (most models)
- Tough rotocast Holding tanks
- Larger Fresh tanks – 48 gallons vs competitions 40 gallon (dual axle models)
- Larger Black tanks – 39 gallons vs competitions 28 gallons (dual axle models)
- Safety slam friction hinge entrance door
- Power Tongue jack (dual axle models)
- 6 gallon g/e water heaters STD (even on single axle models)
- 1 year manufacturers warranty with a 3 yr. structural warranty

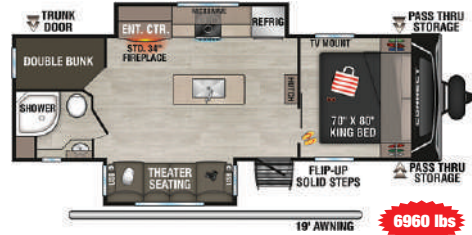
Super Lite Series offer the same advantage of the Autumn Ridge but uses Tuffshell vacuum bond construction for a lighter option.

• TuffShellIT - vacuum bonded laminated construction: Delivers a strong and lasting structure resistant to external factors.  
 Intensive Fiberglass Bonding Process: Applies 144 tons of pressure for 16-18 minutes for complete adhesive coverage and curing.

- ¾ front fiberglass cap
- Aluminum rims
- Rear roof access ladder

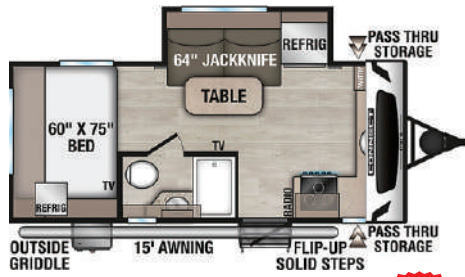


# 2025 KZ Connect



KZ Connect 252BH

**\$39,995** \*\*\*\$310 per month



KZ Connect 181FKK

**\$25,991** \*\*\*\$205 per month



KZ Connect 323MCK

**\$53,995** \*\*\*\$435 per month

## 2025 KZ Connect Advantages

- Over 50 years of experience
- Backed by Thor Industries – the #1 manufacturer in the industry
- True 2-year manufacturer warranty vs one year with competitor's
- 3-year structural warranty
- 1-piece, seamless, Tufflex roofing material w/lifetime warranty
  - 3/8" decking allows it to be 100% walkable
  - The 100% PVC material doesn't need a wear layer like competition's roofs
  - High solar reflectivity
  - Flexible and incredibly puncture resistant
- Laminated Azdel composite panels – No mold, mildew, rotting or warping
  - 50% lighter than wood
  - Unaffected by temperature and humidity changes
  - Superior thermal insulation
- 5/8" tongue & groove plywood floor decking allows for a more residential style construction
- Beauflor flooring in slideouts
- Climate package includes heated and enclosed underbelly
  - Two ways of heating the underbelly (forced and radiant) extends your season
- NXG Huck bolted & powder coated Frame
  - American made w/ HSLA – High strength low alloy prime steel
- Nitrogen filled Goodyear tires w/aluminum wheels
- RV airflow system – 40% more efficient than standard air systems
  - Captures 100% of the air in the ducts
  - Consistent airflow throughout the camper – meaning your camper cools faster
  - This also means less time = less energy consumption
- KZ Engage: Powered by OneControl w/5" Screen control system
  - Monitors tank levels & battery levels
  - Controls slide rooms, leveling system, awnings, inside/outside lighting
  - Prepped for TPMS to be added
- Hand-Crafted Mortise & Tenon cabinet doors w/ Rich Woodbridge Maple cabinetry

# 2025 Keystone Bullet



Classic 1840RB

**\$26,991** \*\*\*\$229 per month



Crossfire 2530RD 5,600 lbs.

**\$31,791** \*\*\*\$259 per month



270RKS

**\$44,995** \*\*\*\$349 per month



Classic 2840QB 6,400 lbs.

**\$30,971** \*\*\*\$249 per month



Bullet 310RES

**\$49,995** \*\*\*\$405 per month



2025 4 Panel Max Solar



Ember Overland 221MSL 5,700 lbs.

**\$53,999** \*\*\*\$449 per month

## Due in Nov



336BBK

**\$54,995** \*\*\*\$449 per month

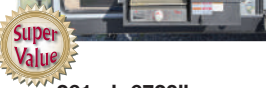
\*Financing figured with 15% down plus tax, title and license WAC for 120 Months at 7.99% \*\*Financing figured with 15% down plus tax, title and license WAC for 144 Months (Some inventory over \$50,000 may qualify for 240 months) at 8.49%  
 \*\*\*Financing figured with 15% down plus tax, title and license WAC for 180 Months at 8.49%. \*\*\*\*Financing figured with 15% down plus tax, title and license WAC for 240 Months at 8.49%. See your sales associates for more details

## 2025 Stratus Advantages over the Competition

- NXG Huck bolted & powder coated frame
  - o American made w/ HSLA – High strength low allow prime steel
- Laminated Azdel composite panels – No mold, mildew, rotting or warping
  - o 50% lighter than wood
  - o Unaffected by temperature and humidity changes
  - o Superior thermal insulation
- 5/8” tongue & groove plywood floor decking allows for a more residential style construction
- RV airflow system – 40% more efficient than standard air systems
  - o Captures 100% of the air in the ducts
  - o Consistent airflow throughout the camper – meaning your camper cools faster

This also means less time = less energy consumption
- Weather shield package includes heated and enclosed underbelly + 360-degree radiant foil wrap
  - o Two ways of heating the underbelly (forced and radiant) extends your season
  - o Radiant foil wrapping also includes the tanks
- 1-piece, seamless, Tufflex roofing material w/lifetime warranty

## 2025 Stratus



261vrb 6720lbs



\*\*\*\$279  
per month  
**\$36,991**



241vrk 5770lbs



\*\*\*\$279  
per month  
**\$36,991**

262vfk 7170lbs



\*\*\*\$355  
per month  
**\$45,995**

## 2025 SportTrek



## 2025 SportTrek Advantages over the Competition

- Heirloom maple and antique white glazed cabinetry-most storage in its class
- ¾ fiberglass front cap with panoramic automotive front window
- 82” interior ceilings with 72” slide out heights
- Most Floorplans with outdoor kitchens
- NXG Huck Bolt, powder coated & baked frame=superior main frame
- Azdel composite exterior panels are used in place of luan plywood, thus providing less weight, better insulating properties & sound deadening, moisture resistance, and no formaldehyde
- Serta Memory Foam 60x80” full size Queen mattress w/ stor mor nightstands
- Wide Trek Axles with polished aluminum rims
- Under booth storage totes
- 5/8” tongue & groove plywood floor decking (on 16” centers) vs competitors pressed wood floors
- 250 lbs. Rated frame mounted accessory receiver
- Aluminum Flip Up Steps w/Fold Away Grab Handle gaining extra safety
- Dicor “Tufflex” one piece PVC roof with lifetime warranty
- Forced air heated and enclosed tanks and waste valves
- RV Airflow System-increased AC airflow by 40%

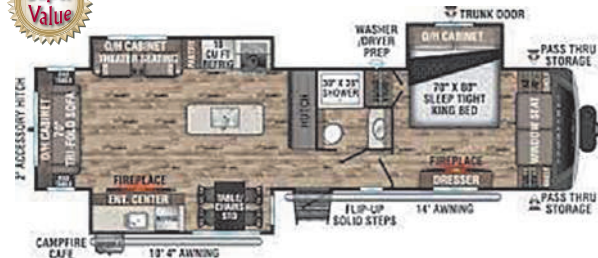


Sporttrek touring 336vrk

9,020 lbs.

**\$59,991**

\*\*\*\$499  
per month



Sporttrek Touring 343VIK

8,870 lbs.

**\$59,991**

\*\*\*\$499  
per month



Sporttrek 312VIK

7,600 lbs.

**\$45,991**

\*\*\*\$335  
per month





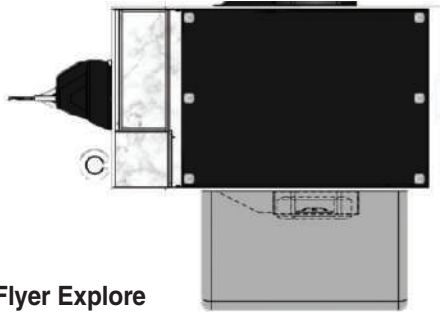
# 2025 Intech RV

See why there is no comparison to the top of line, completely aluminum framed trailer 20230



## Intech Advantages

- (Class leading) Fully welded cage to the chassis to eliminate twists or structural weaknesses
- Weight friendly- cut by 1/3 using aluminum instead of steel
- Modern Interior design



Flyer Explore

2110 lbs

\*\*\*\$245 per month

**\$24,491**



OVR Navigate

5900lbs

**\$54,991**

for \$470



Sol Dusk Rover

3,980 lbs.

**\$44,940**

\*\*\*\$350 per month



SOL Eclipse

3660 lbs

**\$43,426**

\*\*\*\$340 per month



Aucta Magnolia Rover

5,200 lbs.

**\$61,915**

\*\*\*\$540 per month



**Amazing Acuta  
Bunkhouse Floor Plan  
Coming Soon in 2025!**

\*Financing figured with 15% down plus tax, title and license WAC for 120 Months at 8.49% \*\*Financing figured with 15% down plus tax, title and license WAC for 144 Months (Some inventory over \$50,000 may qualify for 240 months) at 8.49%  
\*\*\*Financing figured with 15% down plus tax, title and license WAC for 180 Months at 8.49%. \*\*\*\*Financing figured with 7.99% down plus tax, title and license WAC for 240 Months at 8.49%. See your sales associates for more details\*





Coming this winter  
**Brinkley new I Series Travel Trailers**  
 Estimated \$55,900 **26'**



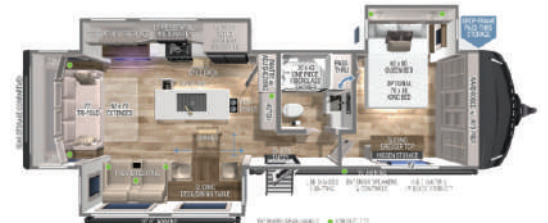
**2025 Brinkley 295 Z Air travel trailers**  
**\$65,900** 9,168 lbs.  
**\$529/mo\***



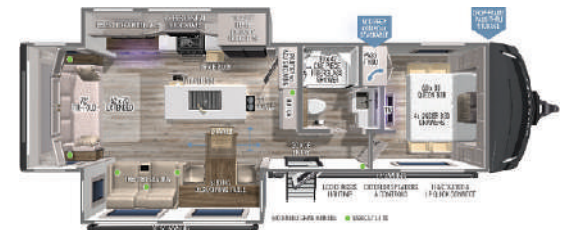
**2025 Brinkley 285 Z Air travel trailers**  
**\$69,900** 9,242 lbs.  
**\$569/mo\***



**2025 Brinkley 310 Z Air travel trailers**  
**\$79,900** 10,961 lbs.  
**\$675/mo\***



**Due In November**  
**2025 Brinkley 297 Air Travel Trailers**  
**\$69,990**





## 2025 GSL Fifth Wheel Advantages over the Competition

- 60 years of RV experience
- Part of the Jayco Family since 1991
- Magnum Roof System:
  - o Reinforced crowned truss roof rafters w/ 3/8" fully walkable roof decking
  - Strength tested to 4500lbs – up to 50% stronger than the competition
  - o Screwed not stapled construction
  - Reduced chance of fasteners coming loose & puncturing the rubber roof material
  - o 7" header beams between the roof and slide out openings
  - Similar to load-bearing areas in home construction
  - o Thicker wood instead of aluminum – Vertical 2X2" studs
  - Maximizes load capacity
  - Provides smoother edges to run wiring which greatly reduces risk of electrical shorts
  - o Oversized nail plate joint fasteners attached to both sides of the trusses
  - Tighter trusses = less chance of movement
  - PVC roof membrane w/ limited lifetime warranty
  - TuffShell – Vacuum bonded laminated walls reinforced w/ heavy-duty fiberglass & welded aluminum frames
  - o 144 tons of pressure applied for 18 minutes to ensure 100% adhesive coverage & curing
- Laminated Block foam floor
- 100" Wide-body construction on all GSL fifth wheels
- Equa-flex axle suspension system
- o Brass hanger bushings w/wet bolt
- Levelloc – 4-point automatic leveling w/ JT's Strong Arms
- Xtend Solar I pkg - Standard w/ 200watts of roof mounted solar & 30amp controller
- Fully enclosed underbelly w/ ducted heat & cold air return
- Enclosed exterior docking station w/ black tank flush
- o Enclosed cable operated gate valves as well
- 10CuFt 12V Fridge
- 75Lb ball bearing drawer guides
- Flush floor slide out w/ residential vinyl flooring
- Hardwood cabinet doors and slide out fascia
- Roller blackout night shades
- 15k BTU main AC standard w/ 2nd AC prep/option
- Keyed-Alike entry and baggage doors
- Painted fiberglass front cap w/ LED lighting
- TravelLink – Smart RV system
- Bluetooth ceiling & exterior speakers
- 60X80" residential queen bed
- 50-amp service is standard on all GSL fifthwheels

## 2025 Starcraft GSL 5th Wheel



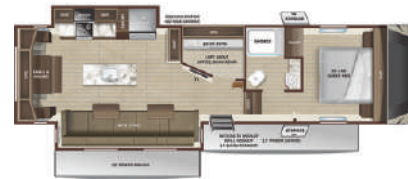
Super Value

Starcraft 264RLS

9,680 lbs.

**\$57,991**

\*\*\*\$568 per month

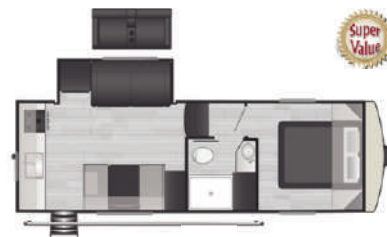


Starcraft 304bhs 8825LBS

**\$55,995**

\*\*\*\$548 per month

## 2025 Keystone Arcadia 5th Wheel



Super Value

Arcadia 21srk 6817lb

**\$37,991**



**\$38,991**

\*\*\*\$315 per month



Super Value

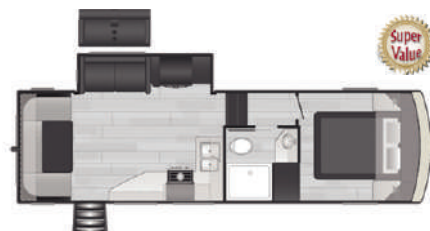
Arcadia Select 27SBH 5,000 lbs.

## Arcadia 5th Wheel Advantages over the Competition

- Super strong frame with center spine for optimal structural integrity.
- HyperDeck water resistant composite floor, one of the most durable and well insulated in its class.
- Slide outs with floor flush linoleum instead of carpet
- Revolutionary NGC2™ Next Generation Crawlspace Chassis
- Peak weather protection with 2 layers of roof insulation and 1 layer of reflective foil insulation
- Coleman 15K BTU ducted ultra quiet Coleman Mach Q-Series A/C & residential filter
- 107 gallons of total fresh water capacity
- Fully enclosed, insulated and heated holding tanks
- 12-volt heat pads on all holding tanks
- Dexter Nev-R-Adjust electric brake system
- Extra-wide 30" entrance door w/ friction hinge
- 1-piece AlphaPly™ TPO membrane (lifetime limited warranty)
- Door-side, quick-connect external spray port
- A combination city water fill and power fresh tank fill connection, eliminating slower gravity fill option
- "On Demand" tankless water heater

Arcadia 25SRD est 7500lbs

**\$38,991**



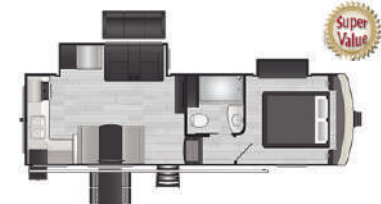
Super Value

Super Lite 242SLMD

**\$47,991**

Super Value

\*\*\*\$399 per month



Super Value

\*Financing figured with 15% down plus tax, title and license WAC for 120 Months at 7.99% \*\*Financing figured with 15% down plus tax, title and license WAC for 144 Months (Some inventory over \$50,000 may qualify for 240 months) at 7.99%

\*\*\*Financing figured with 15% down plus tax, title and license WAC for 180 Months at 7.99%. \*\*\*\*Financing figured with 15% down plus tax, title and license WAC for 240 Months at 7.99%. See your sales associates for more details\*

# 2025 SportTrek Touring 5th Wheel



**2024** **Super Value**



**Sporttrek 353Vik** 11,210 lbs.  
**\$64,991** \*\*\*\$439 per month



**Sporttrek 353VRK** 11,120 lbs.  
**\$75,995** \*\*\*\$539 per month

## 2025 SportTrek 5th Wheel Advantages over the Competition

- BAL NXG Huck Bolted Drop Frame - Powder coated to help prevent rust-largest storage in its class!
- BAL 4-point Electric auto leveling system
- BAL accessory hitch w/ 3000lbs towing capacity and 300lbs of vertical hitch weight
- Dexter heavy-duty axles
- Fiberglass front cap w/automotive paint
  - o Automotive windshield integrated into front cap
- Goodyear Endurance tires
  - o Aluminum wheels w/undermounted full-sized spare
- Best-In-Class 185CuFt heated pass-through storage
  - o Open access between front and basement storage
- Mor-Ryde rubber pin box w/Mor-Ryde CRE 3000 suspension
- Laminated rear wall and side walls w/Azdel
  - o Fiberglass slide out end walls
- Weather-Shield
  - o 360 degree wrapped astro foil
  - o Cut to fit residential block foam insulated side and rear walls
  - o Fully enclosed underbelly w/ forced and radiant heat + 12v heated holding tanks
- Dinette table w/ 2 chairs and 2 versa benches (can be used as coffee tables and more storage!)
- 18" GE Stainless Steel dishwasher
- Solid surface countertops
- Double pantry space w/adjustable shelves & hutch for extra work space (4 large drawers for more storage)
- Tankless on-demand water heater
- 16CuFt 12v side-by-side fridge w/ access to fridge when slides are in
- Campfire Café w/entertainment center
  - o 40" LED smart TV w/swing arm bracket
  - o 110V mini-fridge
  - o Stainless steel sink
  - o Adjustable faucet w/hot & cold water + additional spray hose
  - o Lodge griddle
  - o JBL Flip speaker w/Bluetooth
- 200 watts of roof mounted solar – standard

# Salem Hemisphere



**286RL** 9,380 lbs.  
**\$52,921** \*\*\*\$524 per month



**369BL** 11,669 lbs.  
**\$69,995** \*\*\*\$484 per month



**36FL Elite** 12,624 lbs.  
**\$79,995** \*\*\*\$589 per month



**375FAM** 12,829 lbs.  
**\$72,995** \*\*\*\$504 per month



**ROOST 43** 15,364 lbs.  
**\$94,995**



\*Financing figured with 15% down plus tax, title and license WAC for 120 Months at 8.49% \*\*Financing figured with 15% down plus tax, title and license WAC for 144 Months (Some inventory over \$50,000 may qualify for 240 months) at 8.49%  
 \*\*\*Financing figured with 15% down plus tax, title and license WAC for 180 Months at 8.49%. \*\*\*\*Financing figured with 15% down plus tax, title and license WAC for 240 Months at 8.49%. See your sales associates for more details\*



# 2025 Brinkley

## Model Z

Coming Soon

### 2670 PREVIEW



2670 Brinkley

10,291 lbs.

**\$79,999**

\*\*\*\*\$545  
per month

### 3515 PREVIEW



3515 Brinkley

13,838 lbs.

**\$101,999**

\*\*\*\*\$729  
per month

2024

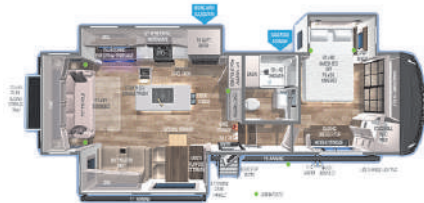


Brinkley 2900

11,674 lbs.

**\$88,999**

\*\*\*\*\$632  
per month



Brinkley 3100

11,927 lbs.

**\$89,999**

\*\*\*\*\$639  
per month

2024



Brinkley 3110

12,146 lbs.

**\$89,999**

\*\*\*\*\$639  
per month



Brinkley 3610

14,695 lbs.

**\$99,999**

\*\*\*\*\$710  
per month



## Brinkley

### Advantages over the Competition

- Mid-high profile - Industry First (79'6" Bedroom Height)
- Azdel exterior walls
- Alpha bond mylar seal on all seams - No caulk to seal
- Skirting metal is riveted vs screws - Best finish in the market
- Maintenance free roof
  - Industrial gasket seals (same as what is used in houses in Florida)
  - Additional MS polymer for peace of mind
  - 25-year warranty on roof membrane
- 370 watts of **standard** roof solar
  - 50a MPPT Charge controller
  - Inverter prep with whole coach inversion
- 17.5" h-rated cooper tires with custom rim
- TPMS system with 2.5" screen is **standard**
- 7k axles w/road defense powder coating
- Self-adjusting brakes
- MORryde cre 3000 w/1/2" shackle brackets, bronze bushing and greaseable zirks
- 75gal fresh tank capacity, true 90gal grey and 45gal black
- Electric dump valves w/clear termination tank cover
- Motion sensing under mounted lighting
- 65' retractable water hose reel
- Brass water fittings vs plastic
- Tankless on-demand water heater
- "Junk in the trunk" insulated and heated 48x40x15 rear storage
- Upgraded rear receiver w/ 3000lb towing cap and 300lb carrying cap
- Residential interior that is staple and putty free
  - Integrated window screen and insulated blackout blinds
- 16 CuFt 12v fridge with full access when slide out is closed
- Flush-floor main level slide out rooms
- Cabinet ducted heating w/thermaflex heat ducts that won't kink or tear
- Water shut-off valves at all fixtures

\*Financing figured with 15% down plus tax, title and license WAC for 120 Months at 7.99% \*\*Financing figured with 15% down plus tax, title and license WAC for 144 Months (Some inventory over \$50,000 may qualify for 240 months) at 8.49%  
 \*\*\*Financing figured with 15% down plus tax, title and license WAC for 180 Months at 8.49%. \*\*\*\*Financing figured with 15% down plus tax, title and license WAC for 240 Months at 8.49%. See your sales associates for more details\*



# 2025 Brinkley Model G

**\$165,999**

**\*1129**  
per month

Available to order



3250

**\$155,999**

**\*1108**  
per month

Available to order



Brinkley 3500

16,967 lbs.

**\$159,999**

**\*1136**  
per month



4000

17,674 lbs.

**\$174,999**

**\$1243**  
per month

Available to order



3970

18,700 lbs.

**\$169,999**

**\*1211**  
per month



Brinkley 3950

18,700 lbs.

**\$179,999**

**\*1278**  
per month

Available to order



4100

18,600 lbs.

**25% OFF**

All in Stock RV Parts

Excludes W/O, sale, and special order parts. Valid thru 10-31-24.



Revised  
8/1/24

**PREMIER**  
LLC



746 Industrial Drive  
Blue Grass, IA 52726  
(563) 424-7788  
premierrv.com

**2024 SunLite  
13MJ**



**\$13,991**

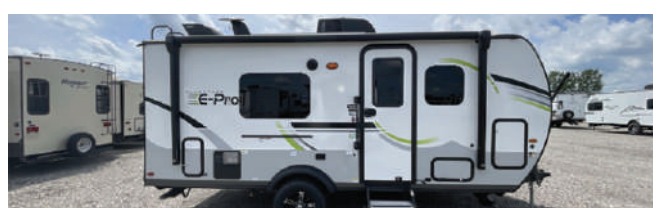
**Cherokee Alpha Wolf  
23RD-L**



Was  
**\$25,995**

Blowout  
**\$19,941**

**22 Flagstaff E-Pro  
19FD**



Was  
**\$24,995**

Blowout  
**\$18,991**

**2017 Hideout  
315RDTS fifth wheel**



Was  
**\$33,595**

Blowout  
**\$24,991**

Revised  
10/01/2024

**PREMIER**  
LLC



746 Industrial Drive  
Blue Grass, IA 52726  
(563) 424-7788  
premierrv.com

Travel Trailers

Stock#	Layout	Sleep	Ext.	Slide	Year	Model	Bed	Air	Awning	UVW	Status	Price	Super Value
2278	RK	3-4	AL	0	2024	Sunset Park RV Sun Lite LTD 13MJ	CQ	1	electric	2,460	90 Day	\$13,991	
2239	TD	2	FIB	0	2022	Little Guy Helio 4	QI	1	none	1,135	90 day	\$18,595	
2176	TD	2	FIB	0	2018	Intech Luna	QI	1	none	1,800	as-is	\$15,995	\$13,895
2307	RK/RB	4	FIB	1	2023	Starcraft Super Lite Maxx 17MDS	MB	1	electric	4,135	90 day	\$23,995	
2342	BH	6	FIB	0	2018	Keystone Passport Express 175BH	CQ	1	electric	3,160	as-is	\$15,795	
1736	RB	4	FIB	0	2022	Forest River Flagstaff E Pro E19FD	MB	1	electric	3,294	90 day	\$24,995	\$17,991
1903	BH	6	FIB	1	2022	Forest River R-Pod 193	CQ	1	electric	3,766	90 Day	\$21,995	\$17,991
2253	BH	7	FIB	0	2022	Ember Overland 190MDB	MB	1	electric	4,486	90 day	\$29,995	
2131	BH	6	FIB	1	2019	Dutchmen Coleman Light 2155BH	MB	1	electric	4806	as-is	\$15,995	\$14,991
2337	HY	6	FIB	0	2005	Jayco Jay Feather 21J	QI	1	manual	4,075	as-is	\$4,795	
2382	RB	4	FIB	1	2017	KZ Connect 211RBK	QI	1	electric	4,270	as-is	\$14,995	
2321	RE	3-4	FIB	1	2023	KZ Connect SE 221RESE	QI	1	electric	5,134	90 day	\$27,595	
2353	RB	4	FIB	1	2017	Keystone Bullet Premier 22RBPR	QI	1	electric	4,870	as-is	\$21,595	
1833	RL	4	FIB	1	2019	Cherokee Alpha Wolf 23RD-L	QI	1	electric	5,448	as-is	\$25,995	\$19,991
2296	BH	8	FIB	1	2022	Grand Design Imagine 23BHE	QI	1	electric	5,596	90 day	\$25,595	
2402	RB	4	FIB	1	2015	Keystone Passport Elite 23RB	Q	1	electric	4,640	as-is	?	
2276	RE	4	FIB	1	2013	Dutchmen Kodiak 242RESL	QI	1	electric	5,134	as-is	\$14,995	
2391	BH	8	FIB	1	2020	Jayco WhiteHawk 24MBH	QI	1	electric	5,997	as-is	\$24,995	
2395	BH	8	AL	1	2019	Keystone Hideout 242LHS	QI	1	electric	5,590	as-is	\$13,995	
2366	RL	6	FIB	1	2019	Grand Design Imagine 2500RL	QI	1	electric	5990	as-is	\$18,295	
2334	BH	10	AL	0	2024	Starcraft Autumn Ridge 26BH	QI	1	electric	4,945	90 day	\$19,595	\$17,991
2358	BH	10	FIB	1	2017	Keystone Bullet 272BHS	QI	1	electric	5,150	as-is	\$19,695	
2238	BH	10	AL	1	2022	KZ Sportsmen SE 301BHKSE	QI	1	electric	5,260	90 day	\$25,995	\$24,411
2320	BH	10	FIB	2	2016	Keystone Sprinter 31BH	QI	1	electric	8,040	as-is	\$19,995	
2381	RK	6	AL	1	2011	Jayco Jay Flight 31RKs	QI	1	electric	7,174	as-is	\$14,595	
2159	RK	4	FIB	2	2018	Keystone Cougar Half Ton 33MLS	QI	1	electric	8,020	as-is	\$27,995	\$24,991

Fold Down

Stock#	Layout	Sleep	Ext.	Slide	Year	Model	Bed	Air	Awning	UVW	Status	Price	Super Value
2377	FD	4	AL	0	2022	Purple Line LLC Opus OP2	Q&T	1	manual	3244	90 day	\$19,891	

Toy Hauler Fifth Wheels

Stock#	Garage	Sleep	Ext.	Slide	Year	Model	Bed	Air	Awning	UVW	Status	Price	Super Value
2364	19	5	FIB	0	2023	ATC Gamechanger 3619	QI	3	electric	11234	90 day	\$99,991	
2338	13'	9	FIB	4	2021	Dutchmen Voltage Triton 4271	KI	3	electric	15120	as-is	\$68,590	

Toy Hauler Fifth Wheels

Stock#	Layout	Sleep	Ext.	Slide	Year	Model	Bed	Air	Awning	UVW	Status	Price	Super Value
2364	19	5	FIB	0	2023	ATC Gamechanger 3619	QI	3	electric	11234	90 day	\$99,991	
2338	13'	9	FIB	4	2021	Dutchmen Voltage Triton 4271	KI	3	electric	15120	as-is	\$68,590	

Fifth Wheels

Stock#	Layout	Sleep	Ext.	Slide	Year	Model	Bed	Air	Awning	UVW	Status	Price	Super Value
2303	BH	8	FIB	2	2021	Starcraft Telluride 297BHS	QI	1	electric	8,130	as-is	\$39,995	
2365	BH	10	FIB	2	2017	Keystone Cougar X-Lite 28RDB	QI	2	electric	7,760	as-is	\$25,995	
2256	MB	8	FIB	4	2018	Jayco Eagle HT 30.5MBOK	QI	2	electric	10,117	as-is	\$33,995	
1764	RE	6	FIB	3	2017	Keystone Hideout 315RDTS	QI	1	electric	9,470	as-is	\$33,595	\$24,991
2359	RL	6	FIB	3	2023	Keystone Sprinter Limited 3190RLS	KI	2	electric	10,461	90 day	\$45,595	
2383	RL	?	FIB	3	2020	Keystone Montana 3121RL	KI	?	electric	12,060	as-is	\$49,990	
2227	RL	6	FIB	3	2016	Grand Design Solitude 321RL	QI	2	electric	11,632	as-is	\$36,995	\$29,995
2360	RE	3	FIB	3	2016	Forest River Wildcat 327RE	QI	1	electric	10,690	as-is	\$19,995	
2304	RL	4	FIB	4	2022	Keystone Avalanche 338GK	KI	2	electric	12,523	90 day	\$54,995	
2310	RL	4	FIB	4	2013	KZ Durango 355RL	QI	1	electric	10,720	as-is	\$18,995	
2384	BH	10	FIB	3	2021	Grand Design Solitude 3550BH	?	2	electric	13,156	as-is	\$55,995	
2407	FB	?	FIB	3	2017	Jayco Pinnacle 36FBTS	KI	?	electric	?	as-is	\$41,995	
2389	FL	6	FIB	6	2018	Forest River Sierra 379FLOK	KI	2	electric	13,485	as-is	\$44,995	
2401	FL	6	FIB	4	2023	Grand Design Reflection 370FLS	QI	2	electric	11,950	90 day	\$56,995	

Motorhomes

Stock#	Layout	Sleep	Ext.	Slide	Year	Model	Bed	Air	Awning	UVW	Status	Price	Super Value
2363	FL	6	FIB	2	2019	Thor Windsport 34R	KI	2	electric	-	as-is	\$89,995	

# FREE WINTERIZE with the purchase of a maintenance package

With over 400 years of RV experience, Premier RV has the service department you can trust.

## Did you know? Manufacturers recommend:

- 1) Preventative sealing all windows, doors and extrusions on your RV every 6-12 months?
- 2) Wheel bearings and brakes adjusted once a year or 12,000 miles Adding grease to the buddy bearings is not the same and typically customers will add too much causing problems.
- 3) Clean and condition your rubber roof at least once a year.

Servicing your RV on a regular maintenance schedule is necessary to ensure its safety and reliability

X Based on Tandem Axle

PREFERRED		VALUE		BASIC		ECONOMY	
<b>Wheel/Hub Maintenance</b> \$490	<b>LP Furnace inspection</b> \$359/ea.	<b>Wheel/Hub Maintenance</b> \$490		<b>Wheel/Hub Maintenance</b> \$490		<b>Wheel/Hub Maintenance</b> \$490	
Pack wheel bearings & replace axle seals	Clean & inspect burner	Pack wheel bearings & replace axle seals		Pack wheel bearings & replace axle seals		Pack wheel bearings & replace axle seals	
Inspect & adjust brakes & Inspect Suspension	Clean & inspect orifice/ignitor	Inspect & adjust brakes		Inspect & adjust brakes		Inspect & adjust brakes	
Check tire wear & inflation	Check for proper LP pressure & adjust as needed	Inspect suspension		Inspect suspension		Inspect suspension	
Torque wheel lug nuts	Perform a carbon monoxide & LP test	Check tire wear & inflation		Check tire wear & inflation		Check tire wear & inflation	
<b>Dlx. Exterior Roof Maintenance</b>	<b>Refrigerator inspection (non resid)</b> \$239	Torque wheel lug nuts		Torque wheel lug nuts		Torque wheel lug nuts	
Rubber roof clean & wash \$1325	Check operation on 110V, 12V, & LP	<b>Dlx. Ext. Roof Maintenance</b> \$1325		<b>Dlx. Ext. Roof Maintenance</b> \$1325		<b>Basic Ext. Roof Maint.</b> \$359	
Condition rubber roof including slideout rooms	Inspect refrigeration ventilation	Rubber roof clean & wash		Rubber roof clean & wash		Rubber roof clean & wash	
Seal Roof seals/seams (R&R roof tape excluded)	Clean & adjust burner & orifice	Condition rubber roof including slideout rooms		Condition rubber roof including slideout rooms		Condition rubber roof including slideout rooms	
(may need to stay overnight for sealant to setup)	LP test (takes 2 days for maintenance)	<b>Seal Roof seals/seams (R&amp;R roof tape excluded)</b>		<b>Seal Roof seals/seams (R&amp;R roof tape excluded)</b>		Inspect Roof seals and seams	
<b>Exterior Seal Package</b> \$1525	<b>Roof Air inspection</b> \$299/ea.	<b>Exterior Seal Package</b> \$1525		<b>Exterior Seal Package</b> \$1525			
Reseal exterior trim & moldings (no roof)	Amp draw test & Clean Filter	Reseal exterior trim & moldings (no roof)		Reseal exterior trim & moldings (no roof)			
Reseal windows, doors, compartments	Inspect air flow & tighten installation bolts	Reseal windows, doors, compartments		Reseal windows, doors, compartments			
Reseal belt rails and running lights	<b>Oven &amp; Range Inspection</b> \$179	Reseal belt rails and running lights		Reseal belt rails and running lights			
<b>Slide out Maintenance</b> \$485	Check & clean manifold & burner	<b>Zero slides</b>		<b>Zero slides</b>		<b>Zero slides</b>	
Inspect slide out seals & spray with conditioner	Clean & adjust pilot light	Retail \$2500 <b>YOUR COST \$2229</b>		Retail \$1565 <b>YOUR COST \$1379</b>		Retail \$709 <b>YOUR COST \$679</b>	
All exposed slide out gear lubed	Clean & adjust LP pressure & air flow for efficiency	<b>With slide out</b>		<b>With slide out</b>		<b>With slide out</b>	
Inspect slide out adjustment	LP test	Retail \$3340 <b>YOUR COST \$2999</b>		Retail \$1815 <b>YOUR COST \$1619</b>		Retail \$849 <b>YOUR COST \$739</b>	
<b>House Battery Check</b> \$119	<b>Zero slides</b>	<b>3 or more slide outs</b>		<b>3 or more slide outs</b>		<b>3 or more slide outs</b>	
Check fluid levels & Test Battery	Retail \$4359 <b>YOUR COST \$3639</b>						
Cleaning of battery cables, posts & battery top	<b>With slide out</b>						
<b>Water Heater inspection</b> \$179	Retail \$5199 <b>YOUR COST \$4939</b>						
Clean & adjust burner	<b>3 or more slide outs</b>						
Clean Pilot Orifice & burner tube	Retail \$6589 <b>YOUR COST \$6259</b>						
Adjust air flow to insure proper operation							

Protective  
Asset Protection

### Today's Towable Average Repair Costs



Protect yourself from the unexpected. Ask your dealership representative about an XtraRide Service Contract today!



If your unit is  
**less than 13 years old,**  
you may be eligible for service contract.  
Call Kelly, our business manager, for more details.

COUPON

**\$200 OFF**

on any Preowned Service

Contracts Exp. on  
October 31st, 2024