

30% OFF
In Stock Parts
with Coupon

Free
Cookout

The RV Event of the year!

No Hassle, No Haggle with the best service center

See Rascal
From QC River Bandits
Sat 11 - 1pm

7.99%
RATE
SPECIAL

May
2nd, 3rd, 4th

PREMIER RV LLC

Mon, Tues, Wed - 9-5
Thurs, Fri, Sat - 9-6

3RD ANNUAL OPEN HOUSE & RV SALE

"It's great to be back in the RV Industry with this team!!"

Brad and Brandy Thompson



over 400 years of RV experience



PREMIER RV - WHAT CUSTOMERS WANT A DESERVE

- ✓ Quality Brands at volume discounted prices
- ✓ No pressure, transparent sales process
- ✓ Expertise - family owned with over 400 years of RV experience
- ✓ Best Reputation - Better Business Bureau A+ Rating & 4.8 Google Rating
- ✓ Most aggressive financing rates 7.99% w.a.c.*



Sunray109
1,320 lbs.

\$11,991

****\$123**
per month



Starcraft Autumn Ridge 26BH 4,840 lbs.



\$19,991

****\$183**
per month



Sportsmen 180BH 2690 lbs.



\$14,991

*****\$154**
per month

746 Industrial Drive, Blue Grass, Iowa 52726 • 563-424-7788 • www.premierrv.com

Not responsible for printing errors.

[Facebook.com/PremierRVIowa](https://www.facebook.com/PremierRVIowa)

Thompsons Continue the Family Legacy with Premier RV

ADVERTORIAL — Brad Thompson is no stranger to selling RVs. In fact, it's been a part of his life since he was a child. Brad's parents, Jim and Darlene Thompson, owned and operated an RV dealership for decades before passing ownership on to Brad and his four siblings. The siblings, Mark (Dawn) Thompson, Tim (Brenda Thompson), Jill (Larry) Tappendorf, and Ann (Paul) Thorndyke sold the business seven years ago. Brad and his wife, Brandy, decided they weren't finished with the RV industry. In October 2021, the couple opened up their own dealership, Premier RV, in Blue Grass. The company prides itself on offering customer care that can't be found at the big box dealers. "We came up with a model when we started of what customers want & deserve. Every decision, we have that in mind," Thompson said.

Culture is important to the Thompsons, which led them to bring on many people who worked for their previous business. Nearly 80% of their current staff also worked at the previous family dealership. The team collectively has over 400 years of RV industry experience.



Premier RV sales team



We predetermine our lowest possible selling price and post it on selected RV models. It enables our sales team to spend more time focusing on the needs of our guests. Our prices are based on inventory levels, market analysis, huge volume discounts, and fully prepped out RVs with full factory warranties, all at the lowest prices possible. This means NO haggling, gimmicks, high pressure, "make me an offer," "today only," or back and forth to management; just a stress free way to buy. Trade-ins would be gladly accepted on Super Value priced units at market values.

PREMIER RV 2023 TT FINAL LIQUIDATION UP TO 49% OFF MSRP

2023 Sportsmen Classic 170MB

45% off MSRP



2980 LBS

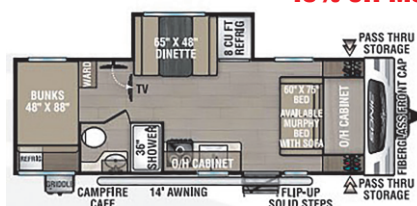
#1484

\$15,991

****\$147**
per month

2023 Sonic SN211VDB

45% off MSRP



4803 LBS

#1521

\$26,891

****\$247**
per month

2023 Super Lite 262RL

47% off MSRP



6120 LBS

#1775

\$26,991

****\$248**
per month

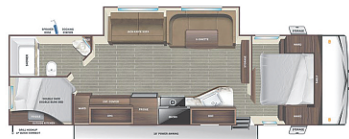
*Financing figured with 15% down plus tax, title and license WAC for 120 Months at 7.99%. **Financing figured with 15% down plus tax, title and license WAC for 144 Months (Some inventory over \$50,000 may qualify for 240 months) at 7.99%.
Financing figured with 15% down plus tax, title and license WAC for 180 Months at 7.99%. *Financing figured with 15% down plus tax, title and license WAC for 240 Months at 7.99%. See your sales associates for more details*.

PREMIER RV 2023 TT BLOWOUT

2023 Autumn Ridge

28BHS

**39% off
MSRP**



#1583

6275 lbs.

*****\$248
per month**

\$26,991

2023 Stratus

SR281VFD

**43% off
MSRP**



#1412

6490 lbs.

*****\$275
per month**

\$33,921

2023 SportTrek

Touring

STT302VRB

**31% off
MSRP**



#1681

7610 lbs.

*****\$418
per month**

\$44,991

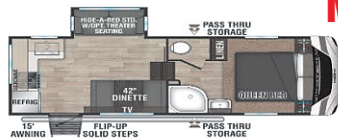
2023 FIFTH WHEEL FINAL LIQUIDATION

2023 Sportsmen

5th Wheel

231RK

**43% off
MSRP**



#1645

6340 lbs.

*****\$276
per month**

\$33,991

2023 Arcadia Super

Lite 5th Wheel

253SLRD

**42% off
MSRP**



#1664

7838 lbs.

*****\$355
per month**

\$43,991

2023 Starcraft Light

5th Wheel

234RLS

**49% off
MSRP**



#1735

234RLS

*****\$299
per month**

\$35,991



SEE WHY CUSTOMERS ALL OVER AMERICA CHOSE PREMIER RV



Kathy Zehner

4 months ago

A great dealership vs the big nationwide guys! From the owner, our salesman, Adam Good, and every single employee we came in contact with... all were polite, interested in us, and very accommodating. Adam is a diligent, but not pushy salesman.

Bernie Wrezinski

5 days ago

Anybody can sell you an rv. Premier understands that there is an ongoing need for follow up . I have found them to be readily accessible for questions and advice. Very important to us as we are new to the type of camper we bought. No question to small for them to help out with.

Aaron David Holst

4 months ago

Best RV retailer in our area, hands-down. From their zero-pressure sales to the above-and-beyond service the people at Premier provide is unsurpassed. Can't say enough good stuff about everyone we worked with at Premier. We feel like we've begun a lasting relationship. Need RV-related anything? Skip the rest and go to Premier RV in Blue Grass.

Dave Eyman

6 months ago

This was my very first visit to Premier RV. They have built a seasoned crew around a new business. I was warmly welcomed upon entering, and I was offered assistance for my visit. I was there to visit a friend and check out their facility. They have a nicely stocked accessory/store area. The entire place was spotless. They have a nice waiting area, stocked with complementary water bottles and coffee. There are a couple of vending machines with snacks available. A service advisor who'd gained my trust over 5+ years of experiences at another location just began his new position here. I also know and trust their service manager from hands-on experience. I'm the third owner of a motorized RV, and they were a vital part of my learning, servicing, and repair needs. Towables are this shops primary target currently, they are building their motorized department. In the course of my visit, along with my furbaby and grandson, I was made to feel very welcome. We met more of their staff and even the owner. I was impressed that he was on the floor working shoulder to shoulder with his staff. I'm confident that when the need arises, I can count on these guys for a quality job. Thanks for the experience today!

Becky McKay

6 months ago

Best RV dealership in the area! They make you feel right at home and they dont pressure you whatsoever, they are there to make sure you have a great experience. Our salesman Skip was great to work with, he answered

any questions we had and kept us up to date through the whole process. Kelly and Caleb were also wonderful the day we picked up our camper, the walk through and paperwork went as smooth as possible. I wouldnt go anywhere else to purchase a camper! Thank you again, we couldn't be any happier with our new fifth wheel!!

Brenda Doss

7 months ago

We just bought a new camper here and had the nicest experience. Our salesman Phil said they are all like family and that is exactly how we were treated. No pressure salesman and Phil was very knowledgeable about the campers we were interested in. Everyone was there to help with anything we needed. I would recommend this be your 1st stop if you are looking for a nice quality camper. It will save you alot of wasted time if you go elsewhere. I love our camper!

Jordan Spaak

8 months ago

Skip was fantastic to work with! He was a no hassle salesman that was friendly and a delight to work with. Being from Colorado, Skip provided extra photos and information for an RV so I could make an informed decision on the purchase of an RV. Everything Skip did for me put me at ease purchasing an RV 1000 miles away. I would highly recommend Skip and Premier RV if you're in the market.

Jonathan Nave

10 months ago

Where to start... Zach ...awesome Zach was who we worked with over the past couple months. He was very informative and made sure to show us what we said that we wanted to look at with in our price range. He didnt pressure us into " deciding right then and there" like those other " guys" . Kelly...awesome Kelly in finance was great to work with. She kept in touch with us every step of the way. She didnt " lay" everything on us at once, she explained the " step" and then once completed moved to the next step. She answered all questions and concern in a manner that we understood, not that jumbled garble that you get at those "box worlds". Ms. Chris...was awesome, she showed us things that every camper needs. She didnt just show us the top of the line products, she showed us all the products that they carry. Other zach (tech) During our walk through showed us everything that was checked, had been done to our camper, answered all our questions and that it was ready to rock and roll We stumbled upon Premier by accident and we are glad we did. From the moment we stepped in the door Megan greeted us like we were walking into a family members house. These guys are great, they treat you like family not a number or just a sale. We will be sending our friends and family on the three hour road trip for all their camping needs. Dont go to the " other guys" if you do youll never forgive yourself. GREAT JOB PREMIER!!!

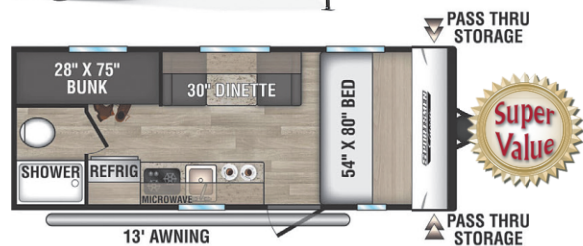


2024 Sportsmen Classic/SE



2024 Sportsmen SE Advantages over the Competition

- Made by Thor Industries- #1 manufacturer of RVs in the World
- Lumber Core Style Cabinetry vs competition pressboard
- Forced Air Heated Underbelly with insulated floor vs competitions only enclosed underbelly no insulated floor
- True 2x2 studded walls and roof trusses on 16" center vs competitions 1 1/2" walls
- Fiberglass wall insulation glued in place allowing it not to settle and cause insulation gaps
- 500 pound weight rated on double bunks (cargo/sleeping)
- More windows that open in most models vs the competition
- Full bedroom wall with sliding door on most bunk models versus competitions curtains
- 80 pound cabinet drawer ratings
- Gas furnace standard
- Larger exterior storage doors
- Magnetic Catches for Baggage Doors
- Battery Disconnect Switch

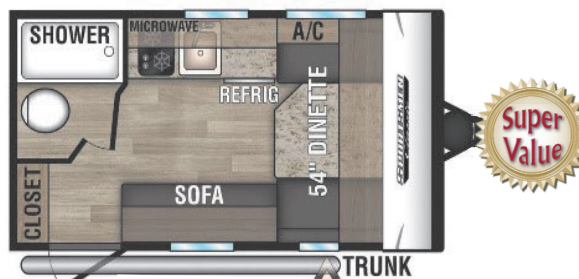


Sportsmen 180BH

2,690 lbs.

\$14,991

****\$154**
per month

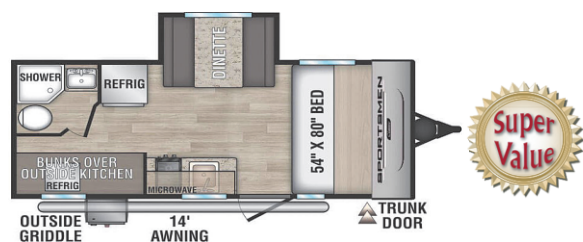


Sportsmen 130RB

2,190 lbs.

\$13,941

****\$143**
per month

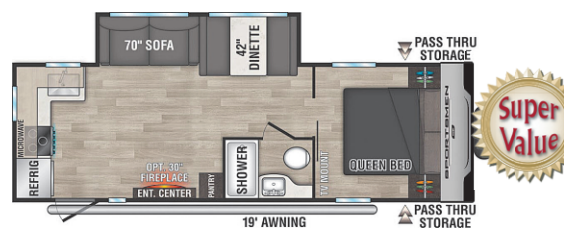


Sportsmen 191BHK

3,490 lbs.

\$18,491

****\$169**
per month



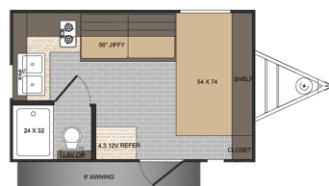
Sportsmen 241RKSE

5,500 lbs.

\$26,991

****\$248**
per month

2024 Sunset Park Trailers



Sunset LTD 13MJ
2,460 lbs.

\$14,991

****\$154**
per month



Sunlite LTD 13BD
2,380 lbs.

\$14,991

****\$154**
per month



Sunray 149
2,260 lbs.

\$15,991

****\$164**
per month

Sunlite LTD 19RK
2,880 lbs.

\$15,991

****\$164**
per month



Sunray 109
1,475 lbs.

\$11,991

****\$123**
per month



Sunlite 16BH
2,650 lbs.

\$16,991

****\$175**
per month

*Financing figured with 15% down plus tax, title and license WAC for 120 Months at 7.99%. **Financing figured with 15% down plus tax, title and license WAC for 144 Months (Some inventory over \$50,000 may qualify for 240 months) at 7.99%. ***Financing figured with 15% down plus tax, title and license WAC for 180 Months at 7.99%. ****Financing figured with 15% down plus tax, title and license WAC for 240 Months at 7.99%. See your sales associates for more details*.

2024 Starcraft Autumn Ridge

most with fiberglass exterior,
TV, enclosed heated underbelly
+ 3 yr. structural warranty



Starcraft Autumn Ridge 182RB 3,465 lbs.

\$17,991 ****\$165**
per month



Starcraft Autumn Ridge 19BH 3,565 lbs.

\$16,991 ****\$160**
per month



Starcraft Autumn Ridge 188BHS 4,245 lbs.

\$19,981 ****\$179**
per month



Starcraft Autumn Ridge 20MB 4,305 lbs.

\$19,891 ****\$179**
per month



Starcraft Autumn Ridge 20FBS 5,016 lbs.

\$22,991 ****\$211**
per month



Starcraft Autumn Ridge 26BH 4,840 lbs.

\$19,991 ****\$183**
per month
with fiberglass **\$21,991** ****\$199**
per month



Starcraft Autumn Ridge 26BHS 5,810 lbs.

\$24,991 ****\$229**
per month
with fiberglass **\$26,991** ****\$248**
per month



Starcraft Autumn Ridge 26RLS 5,860 lbs.

\$26,991 ****\$248**
per month
with fiberglass **\$28,991** ****\$266**
per month

Super Lite



Super Lite 189RG 4,915 lbs.

\$28,991 ****\$266**
per month



Super Lite 233 ML 5,885 lbs.

\$29,991 *****\$275**
per month



241BH 5,800 lbs.

\$29,991 *****\$275**
per month



Super Lite 252RB 6,185 lbs.

\$33,991 *****\$275**
per month

2024 Starcraft Autumn Ridge Advantages

- 2 – 30# lp tanks vs competitions 20# (dual axle models)
- Every window opens vs competitions any Port windows
 - All windows are tinted and safety glass
 - Window in the entry door
 - Upgraded wooden trim around windows with top valance
- All large slideouts are flush floor and use linoleum vs competition carpet
- Xtend Solar I Package: 200 watt solar panel with 30 amp controller
- More cabinets than any of our competition in like floor plans
 - Modern hardware, strong-hold latches, and no-slip lips in all the cabinets enhance convenience.
 - Large bathroom medicine cabinets vs competition no storage mirror (dual axle models)
 - Most bathroom counter space and cabinet space then the competitions
 - at least 2 drawers in every kitchen Starcraft builds
 - Solid master bedroom doors vs competition curtains (26BH model has half wall with others are open)
 - Large mirrored bedroom wardrobe closets with nightstands with outlets/chargers
 - Decorative front bedroom wall panel
- large single-basin sink (stainless steel on dual axle models) and sleek pressed membrane countertops vs competition small bowl
- Large 10.2 cubic Everchill 12V refrigerators with doors that swing either direction
- Decorative kitchen backsplash vs competitions wall board
- 40" wide dinette vs competition 32"
- Heaviest Rated bunks in the industry- Single bunks are a 300# Rating Double bunks are 600#
- Front queen bed have plywood base with struts – storage underneath is separated from exterior storage to keep dirt out
- Premium main bed comforter (most models)
- Tough rotocast Holding tanks
- Larger Fresh tanks – 48 gallons vs competitions 40 gallon (dual axle models)
- Larger Black tanks – 39 gallons vs competitions 28 gallons (dual axle models)
- Safety slam friction hinge entrance door
- Power Tongue jack (dual axle models)
- 6 gallon g/e water heaters STD (even on single axle models)
- 1 year manufacturers warranty with a 3 yr. structural warranty

Super Lite Series offer the same advantage of the Autumn Ridge but uses Tuffshell vacuum bond construction for a lighter option.

• TuffShellIT - vacuum bonded laminated construction: Delivers a strong and lasting structure resistant to external factors.
Intensive Fiberglass Bonding Process: Applies 144 tons of pressure for 16-18 minutes for complete adhesive coverage and curing.

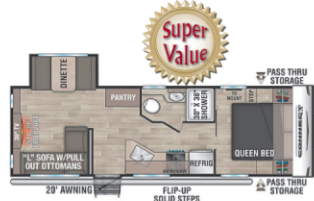
- ¾ front fiberglass cap
- Aluminum rims
- Rear roof access ladder

2024 KZ Connect



KZ Connect 241RLK 5,810 lbs.

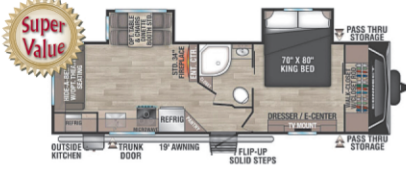
\$32,991 ***\$267 per month



KZ Connect 241RESE 5,630 lbs.

\$29,991

***\$241 per month



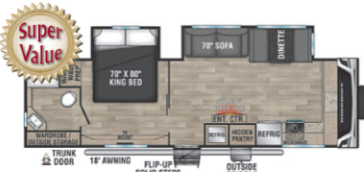
KZ Connect 262RLK 6,890 lbs.

\$37,991 ***\$308 per month



KZ Connect 302RBK 7,680 lbs.

\$38,991 ***\$316 per month



KZ Connect 282FKK 7,260 lbs.

\$40,991 ***\$332 per month

2024 KZ Connect Advantages

- Over 50 years of experience
- Backed by Thor Industries – the #1 manufacturer in the industry
- True 2-year manufacturer warranty vs one year with competitor's
- 3-year structural warranty
- 1-piece, seamless, Tufflex roofing material w/lifetime warranty
 - 3/8" decking allows it to be 100% walkable
 - The 100% PVC material doesn't need a wear layer like competition's roofs
 - High solar reflectivity
 - Flexible and incredibly puncture resistant
- Laminated Azdel composite panels – No mold, mildew, rotting or warping
 - 50% lighter than wood
 - Unaffected by temperature and humidity changes
 - Superior thermal insulation
- 5/8" tongue & groove plywood floor decking allows for a more residential style construction
- Beauflor flooring in slideouts
- Climate package includes heated and enclosed underbelly
 - Two ways of heating the underbelly (forced and radiant) extends your season
- NXG Huck bolted & powder coated Frame
 - American made w/ HSLA – High strength low alloy prime steel
- Nitrogen filled Goodyear tires w/aluminum wheels
- RV airflow system – 40% more efficient than standard air systems
 - Captures 100% of the air in the ducts
 - Consistent airflow throughout the camper – meaning your camper cools faster
 - ▣ This also means less time = less energy consumption
- KZ Engage: Powered by OneControl w/5" Screen control system
 - Monitors tank levels & battery levels
 - Controls slide rooms, leveling system, awnings, inside/outside lighting
 - Prepped for TPMS to be added
- Hand-Crafted Mortise & Tenon cabinet doors w/ Rich Woodbridge Maple cabinetry

2024 Ember E-Series Advantages

- Ember's 1-2-3 Warranty
 - (1) One time transferrable
 - (2) Two-year base warranty
 - (3) Three-year structural warranty
- Laminated Azdel Onboard® composite walls
 - Aluminum framed sidewall construction
- Fully walkable roof w/ one-piece Tufflex® PVC Roofing (Limited Lifetime Warranty)
- Dexter® Axles W/ E-Z lube hubs & forward self-adjusting electric brakes
 - Automatically adjusts the brake shoe during every forward stop
 - ▣ No more adjustments every 3000 miles!
- Goodyear Endurance tires (load range E)
 - Custom aluminum rims
- Best-in-class 82" interior ceiling height
- 18K BTU Max Cool "Whisper Quiet" AC w/ remote
 - Largest Single AC in it's class
- Repositionable EmberTrack™ E-track bunk/storage system
 - 70"X45" rear cargo area w/ large side storage locker (integrated pull-down screen) & rear kayak/bike door
- Congoleum® DiamondFlor® "Carpetless" interior
- Legless Dinette booth w/ All-In-One strut assisted conversion system
- Convection microwave w/ integrated air fryer
- EmberLink™ "Smart RV" system
 - Controls slide room, awning & lights
- XL 55-GAL Fresh tank & 35-GAL Gray/Black Tanks
- Tankless "On Demand" water heater
- 10 CuFt 12V refrigerator
- 12V DC Smart TV w/ integrated sound bar and radio
 - Swivel arm mounting w/ storage behind the TV
- Hardwood framed cabinet doors w/ hidden residential hinges
- Soft close hardwood drawers
- Roller Blackout shades
- Porcelain foot-flush toilet
- 12V multi-speed fan w/ rain sensor & wall control
- Dimmable interior lighting & dimmable awning LED light
- Medicine cabinet w/ LED backlight
- Frame integrated 2" rear receiver w/ 300# capacity
- Repositionable/telescoping roof ladder + rear-mounted bracket
- Keyed-Alike™ Locking System
- 360 Siphon® Roof vent caps

Ember E-Series

Same great Ember quality at an amazing price



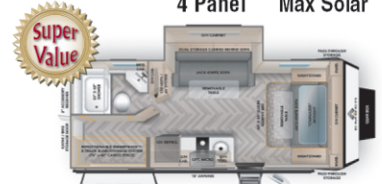
Ember 22MLQ 5,155 lbs.

\$34,591 ***\$279 per month



Ember 22ETS 5,395 lbs.

\$34,995 ***\$284 per month



Ember Overland 221MSL 5,700 lbs.

\$59,651 ***\$480 per month

Keystone Bullet Crossfire



Keystone Bullet 1900RD 3,510 lbs.

\$20,991 ***\$180 per month



Keystone 2530RD 5,600 lbs.

\$31,991 ***\$255 per month



Keystone 2870QB 6,400 lbs.

\$32,991 ***\$265 per month

*Financing figured with 15% down plus tax, title and license WAC for 120 Months at 7.99%**Financing figured with 15% down plus tax, title and license WAC for 144 Months (Some inventory over \$50,000 may qualify for 240 months) at 8.49%

Financing figured with 15% down plus tax, title and license WAC for 180 Months at 8.49%. *Financing figured with 15% down plus tax, title and license WAC for 240 Months at 8.49%. See your sales associates for more details*



2024 Intech RV

See why there is no comparison to the top of line, completely aluminum framed trailer



Intech Advantages

- (Class leading) Fully welded cage to the chassis to eliminate twists or structural weaknesses
- Weight friendly- cut by 1/3 using aluminum instead of steel
- Modern Interior design
- Unmatched quality



Flyer Pursue 1,575 lbs.

\$20,091

****\$185**
per month

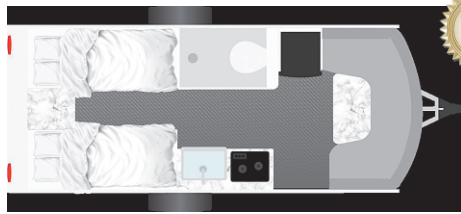


Super Value

Luna Rover 1,850 lbs.

\$23,971

****\$215**
per month



Super Value

Sol Dusk Rover 3,980 lbs.

\$43,991

*****\$364**
per month



Super Value

Sol Horizon Rover 3,372 lbs.

\$41,991

*****\$340**
per month

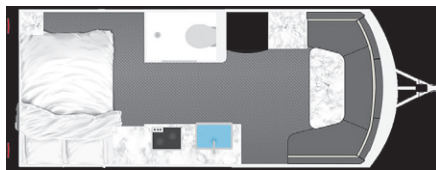


Super Value

Sol Eclipse Rover 3660 lbs.

\$38,991

\$310
per month



Magnolia Rover 5,200 lbs.

\$54,981

*****\$437**
per month



Willow Rover 5,850 lbs.

\$62,791

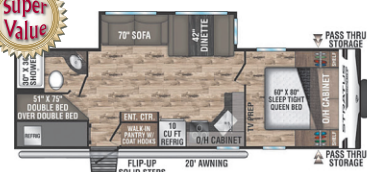
*****\$498**
per month

*Financing figured with 15% down plus tax, title and license WAC for 120 Months at 8.49% **Financing figured with 15% down plus tax, title and license WAC for 144 Months (Some inventory over \$50,000 may qualify for 240 months) at 8.49%
Financing figured with 15% down plus tax, title and license WAC for 180 Months at 8.49%. *Financing figured with 7.99% down plus tax, title and license WAC for 240 Months at 8.49%. See your sales associates for more details*

2024 Stratus Advantages over the Competition

- NXG Huck bolted & powder coated frame
 - o American made w/ HSLA – High strength low alloy prime steel
- Laminated Azdel composite panels – No mold, mildew, rotting or warping
 - o 50% lighter than wood
 - o Unaffected by temperature and humidity changes
 - o Superior thermal insulation
- 5/8" tongue & groove plywood floor decking allows for a more residential style construction
- RV airflow system – 40% more efficient than standard air systems
 - o Captures 100% of the air in the ducts
 - o Consistent airflow throughout the camper – meaning your camper cools faster
 - ☑ This also means less time = less energy consumption
- Weather shield package includes heated and enclosed underbelly + 360-degree radiant foil wrap
 - o Two ways of heating the underbelly (forced and radiant) extends your season
 - o Radiant foil wrapping also includes the tanks
- 1-piece, seamless, Tufflex roofing material w/lifetime warranty
 - o 3/8" decking allows it to be 100% walkable
 - o The 100% PVC material doesn't need a wear layer like competition's roofs
 - o High solar reflectivity
 - o Flexible and incredibly puncture resistant
- LionsHead nitrogen-filled radial tires (VBF)
 - o first year "No Excuses Warranty"
 - o 2-year complimentary roadside assistance
 - o 5-year warranty on radial ST tires and lifetime structural warranty on all wheels
- Rear roof ladder
- Frameless front automotive window
- Keyed alike ONE key system for entry and baggage doors
- SafeTek box w/110V outlets and USB ports
- Heirloom maple & Antique white cabinet doors
- Level Mate Pro makes leveling your RV easy
- Seamless Live edge Surf-X counter tops
- Beauflor flooring w/7-year warranty including slide out floors
- Venture LevelMate PRO system

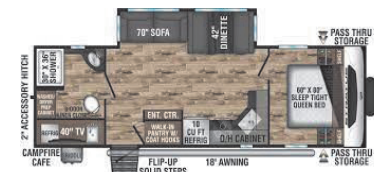
2024 Stratus



Stratus Sport 289VBHS 6,160 lbs.

\$29,991

*****\$245**
per month

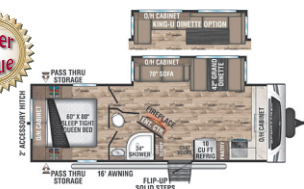


Stratus 261VRB 6,490 lbs.

\$39,991

*****\$325**
per month

2024 SportTrek



Sporttrek 251VFK 6,190 lbs.

\$38,991

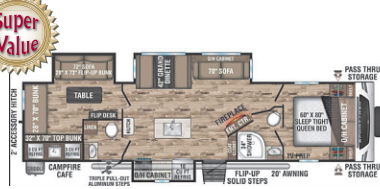
*****\$316**
per month



Sporttrek 312VIK 7,600 lbs.

\$49,990

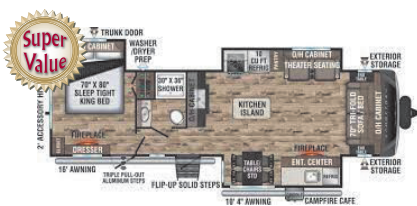
*****\$405**
per month



Sporttrek 333VIK 8,870 lbs.

\$49,991

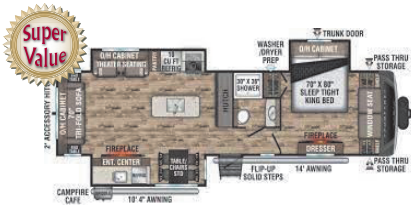
*****\$405**
per month



Sport Trek Touring 333VMI 8,820 lbs.

\$54,991

*****\$449**
per month



Sporttrek Touring 343VIK 8,870 lbs.

\$59,991

*****\$487**
per month

2024 SportTrek Advantages over the Competition

- Heirloom maple and antique white glazed cabinetry-most storage in its class
- ¾ fiberglass front cap with panoramic automotive front window
- 82" interior ceilings with 72" slide out heights
- Most Floorplans with outdoor kitchens
- NXG Huck Bolt, powder coated & baked frame=superior main frame
- Azdel composite exterior panels are used in place of luan plywood, thus providing less weight, better insulating properties & sound deadening, moisture resistance, and no formaldehyde
- Serta Memory Foam 60x80" full size Queen mattress w/stor mor nightstands
- Wide Trek Axles with polished aluminum rims
- Under booth storage totes
- 5/8" tongue & groove plywood floor decking (on 16" centers) vs competitors pressed wood floors
- 250 lbs. Rated frame mounted accessory receiver
- Aluminum Flip Up Steps w/Fold Away Grab Handle gaining extra safety
- Dacor "Tufflex" one piece PVC roof with lifetime warranty
- Forced air heated and enclosed tanks and waste valves
- RV Airflow System-increased AC airflow by 40%

*Financing figured with 15% down plus tax, title and license WAC for 120 months at 7.99% **Financing figured with 15% down plus tax, title and license WAC for 144 Months (Some inventory over \$50,000 may qualify for 240 months) at 7.99%
Financing figured with 15% down plus tax, title and license WAC for 180 Months at 7.99%. *Financing figured with 15% down plus tax, title and license WAC for 240 Months at 7.99%. See your sales associates for more details*

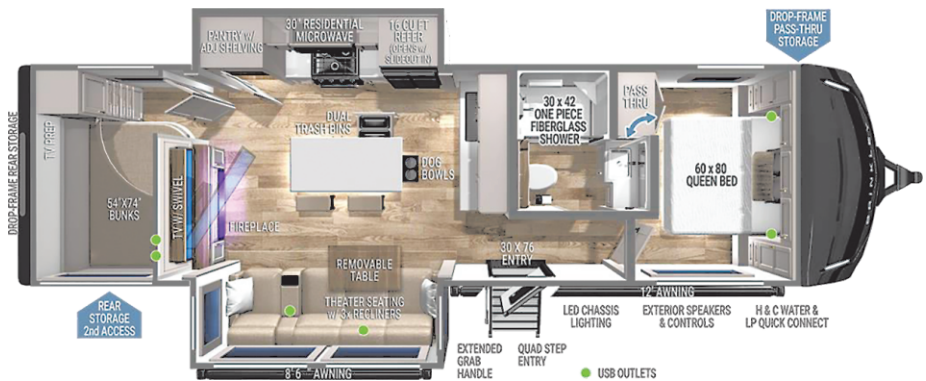


2024 Brinkley 295 Z Air travel trailers

\$65,900 9,168 lbs.

Taking orders now.

\$529/mo*

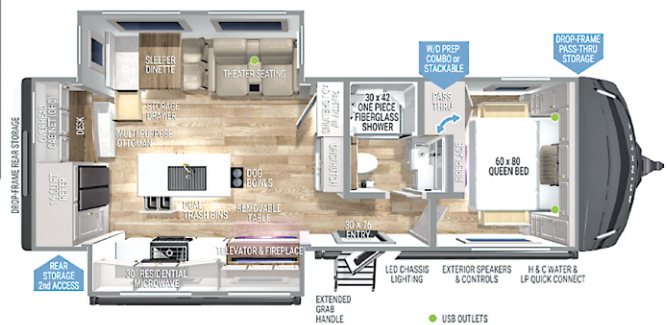


2024 Brinkley 285 Z Air travel trailers

\$69,900 Est. 9,242 lbs.

Taking orders now.

\$569/mo*



2024 GSL Fifth Wheel Advantages over the Competition

- 60 years of RV experience
- Part of the Jayco Family since 1991
- Magnum Roof System:
 - Reinforced crowned truss roof rafters w/ 3/8" fully walkable roof decking
 - Strength tested to 4500lbs – up to 50% stronger than the competition
 - Screwed not stapled construction
 - Reduced chance of fasteners coming loose & puncturing the rubber roof material
 - 7" header beams between the roof and slide out openings
 - Similar to load-bearing areas in home construction
 - Thicker wood instead of aluminum – Vertical 2X2" studs
 - Maximizes load capacity
 - Provides smoother edges to run wiring which greatly reduces risk of electrical shorts
 - Oversized nail plate joint fasteners attached to both sides of the trusses
 - Tighter trusses = less chance of movement
- PVC roof membrane w/ limited lifetime warranty
- TuffShell – Vacuum bonded laminated walls reinforced w/ heavy-duty fiberglass & welded aluminum frames
 - 144 tons of pressure applied for 18 minutes to ensure 100% adhesive coverage & curing
- Laminated Block foam floor
- 100" Wide-body construction on all GSL fifth wheels

- Equa-flex axle suspension system
 - Brass hanger bushings w/wet bolt
- Levelloc – 4-point automatic leveling w/JT's Strong Arms
- Xtend Solar I pkg - Standard w/ 200watts of roof mounted solar & 30amp controller
- Fully enclosed underbelly w/ ducted heat & cold air return
- Enclosed exterior docking station w/ black tank flush
 - Enclosed cable operated gate valves as well
- 10CuFt 12V Fridge
- 7SLb ball bearing drawer guides
- Flush floor slide out w/ residential vinyl flooring
- Hardwood cabinet doors and slide out fascia
- Roller blackout night shades
- 15k BTU main AC standard w/ 2nd AC prep/option
- Keyed-Alike entry and baggage doors
- Painted fiberglass front cap w/ LED lighting
- TravelLink – Smart RV system
- Bluetooth ceiling & exterior speakers
- 60X80" residential queen bed
- 50-amp service is standard on all GSL fifthwheels

2024 Starcraft GSL 5th Wheel



Starcraft 264RLS 9,680 lbs.
\$69,995 ~~***\$568~~ per month

2024 Keystone Arcadia 5th Wheel



Arcadia Select 21SRK 6,850 lbs.
\$37,991 ~~***\$308~~ per month



Arcadia Select 275BH 5,000 lbs.
\$38,991 ~~***\$316~~ per month



Arcadia 253SLRD 7,620 lbs.
\$43,991 ~~***\$353~~ per month



Arcadia 294SLRD 9,035 lbs.
\$49,971 ~~***\$425~~ per month

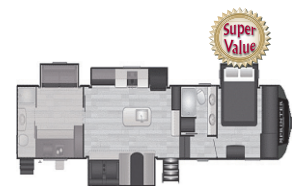
Arcadia 5th Wheel Advantages over the Competition

- Super strong frame with center spine for optimal structural integrity.
- HyperDeck water resistant composite floor, one of the most durable and well insulated in its class.
- Slide outs with floor flush linoleum instead of carpet
- Revolutionary NGC2™ Next Generation Crawlspace Chassis
- Peak weather protection with 2 layers of roof insulation and 1 layer of reflective foil insulation
- Coleman 15K BTU ducted ultra quiet Coleman Mach Q-Series A/C & residential filter
- 107 gallons of total fresh water capacity
- Fully enclosed, insulated and heated holding tanks
- 12-volt heat pads on all holding tanks
- Dexter Nev-R-Adjust electric brake system
- Extra-wide 30" entrance door w/ friction hinge
- 1-piece AlphaPly™ TPO membrane (lifetime limited warranty)
- Door-side, quick-connect external spray port
- A combination city water fill and power fresh tank fill connection, eliminating slower gravity fill option
- "On Demand" tankless water heater

Sprinter 5th Wheel Advantages over the Competition

- 2" thick High Gloss sidewalls vs 1 1/2" on competitors 25% thicker walls
- 100" Wide Body Construction – wider aisles, larger sofas, etc
- Full profile height fifth wheel at mid profile weight and price= taller slide
- DynaSpan Floor-25-year Warranty – same floor used in high end boating industry
- Commonly stocked 4 points leveling system
- Road Armor Suspension System & Pin Box-smoother towing
- Free Standing Legless Dinette w/built in storage & extension Thermal Package-
- Largest freshwater tank in its category – 81 gallons
- Max Turn Radius Front Cap with patented Hitch Vision
- 2nd Air Standard
- Woven interior flooring eliminates carpeting and makes cleaning a breeze
- 200-watt solar panel with capabilities of upgrades
- 3 Year Structural Warranty
- 15.3 CU FT Residential refrigerator with 1000-watt inverter with powered electrical outlets (best in class)
- Solid Surface Countertops
- 70x80 King Bed
- Washer/Dryer Prep Front Closet on same side for easy access
- Roller Shades and upgraded interior features

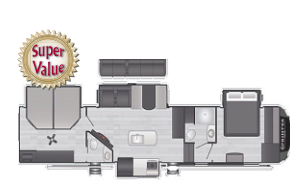
2024 Keystone Sprinter Limited 5th Wheel



Sprinter Limited 3900DBL 12,500 lbs.
\$69,991 ~~***\$530~~ per month



Sprinter 35BH
\$58,991 ~~***\$476~~ per month



Sprinter Limited 3810QBS 13,500 lbs.
\$65,991 ~~***\$490~~ per month

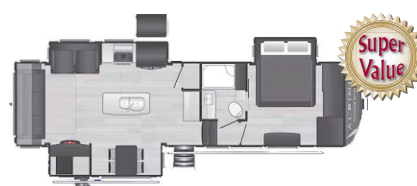
Arriving end of May

*Financing figured with 15% down plus tax, title and license WAC for 120 Months at 7.99% **Financing figured with 15% down plus tax, title and license WAC for 144 Months (Some inventory over \$50,000 may qualify for 240 months) at 7.99%
 Financing figured with 15% down plus tax, title and license WAC for 180 Months at 7.99%. *Financing figured with 15% down plus tax, title and license WAC for 240 Months at 7.99%. See your sales associates for more details*

2024 Alpine Avalanche Edition Advantages over the Competition

- 10" I-beams w/Z-frame technology & 100" wide-body
- Road Armor shock absorbing suspension & hitch pin
 - Smoother towing experience & less road wear on your trailer
- Laminated sidewalls w/double welded aluminum construction & double insulated rear-end wall
- Painted fiberglass cap w/key shield protection
- Radius roof w/5" pre-engineered roof trusses & walkable rafters
- 1-piece Alpha Super Flex TPO membrane
- Summit slide-rooms w/ 6'10" interior height!
 - Hydraulic selector valves for slide outs
- In-house climate testing chamber gives Keystone the ability to ensure quality
- Polar Pack protection for four-season camping
 - Heated and enclosed underbelly
 - Astro foil reflective layer on roof, front, and rear walls
 - Two static attic vents
 - Insulation in the floor wrapped in Darco protective fabric
- Avalanche tested down to -4 degrees and up to 104 degrees
- 7k Dexter axles w/Nev-R-Adjust brakes
- Heavy duty G-rated tires
- Titan Automatic Hydraulic Leveling System
 - Updated touch screen w/single sensor for leveling
 - Low-profile footpad – provides better traction
 - 1/3 the weight of competition's systems
- High-impact lighting for early morning or late-night travel days
- Syncs with Lippert One Control app
- 150CuFt of heated basement storage
- Class "A" style, dual latch slam baggage doors
- Fully enclosed and heated water convenience center
- Dual 15,000 BTU AC units
 - Blade Pure airflow system
 - ☑ 20% more cooling power
 - ☑ Air filtration – MIRV 9 rated
 - ☑ Sound dampening – 10-15 decibels less than competition
- 35k BTU gas furnace
- Fully programmable dual zone temperature control
- 20CuFt 12V fridge
 - Higher efficiency than 2-way fridge
 - Runs off battery during travel
 - Cools in 2-3 hours vs waiting overnight
- 30" residential microwave
- Hardwood slide out fascia, cabinet doors and drawer faces
- Blackout Roller Shades
- Solid surface counters
- King Bed Standard
- Solar Flex 220 – Standard
 - 220 watts of roof mounted solar
 - 30amp Victron MPPT charge controller
 - Inverter prep
 - Inverted loop prep (up to 7 outlets on inverted loop)
 - ZAMP side solar port

2024 Alpine Avalanche Edition

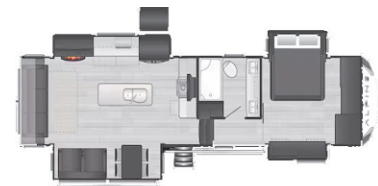


Avalanche 302RS

11,845 lbs.

\$71,991

****\$519
per month

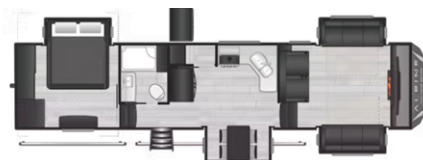


Alpine 3303CK

13,060 lbs.

\$89,295

****\$634
per month



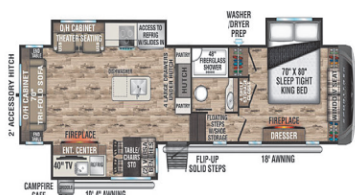
346 FL

12,930 lbs.

\$79,995

****\$559
per month

2024 SportTrek 5th Wheel



SportTrek 353VIK

11,210 lbs.

\$74,995

****\$532
per month



SportTrek 353VRK

11,120 lbs.

\$75,995

****\$539
per month

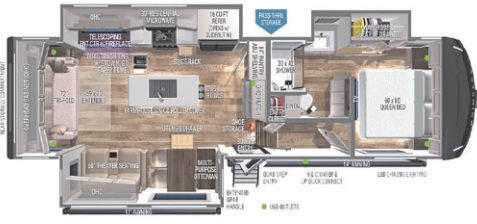
2024 SportTrek 5th Wheel Advantages over the Competition

- BAL NXG Huck Bolted Drop Frame - Powder coated to help prevent rust-largest storage in its class!
- BAL 4-point Electric auto leveling system
- BAL accessory hitch w/ 3000lbs towing capacity and 300lbs of vertical hitch weight
- Dexter heavy-duty axles
- Fiberglass front cap w/automotive paint
 - Automotive windshield integrated into front cap
- Goodyear Endurance tires
 - Aluminum wheels w/undermounted full-sized spare
- Best-In-Class 185CuFt heated pass-through storage
 - Open access between front and basement storage
- Mor-Ryde rubber pin box w/Mor-Ryde CRE 3000 suspension
- Laminated rear wall and side walls w/Azdel
 - Fiberglass slide out end walls
- Weather-Shield
 - 360 degree wrapped astro foil
 - Cut to fit residential block foam insulated side and rear walls
 - Fully enclosed underbelly w/ forced and radiant heat + 12v heated holding tanks
- Dinette table w/ 2 chairs and 2 versa benches (can be used as coffee tables and more storage!)
- 18" GE Stainless Steel dishwasher
- Solid surface countertops
- Double pantry space w/adjustable shelves & hutch for extra work space (4 large drawers for more storage)
- Tankless on-demand water heater
- 16CuFt 12v side-by-side fridge w/ access to fridge when slides are in
- Campfire Café w/entertainment center
 - 40" LED smart TV w/swing arm bracket
 - 110V mini-fridge
 - Stainless steel sink
 - Adjustable faucet w/hot & cold water + additional spray hose
 - Lodge griddle
 - JBL Flip speaker w/Bluetooth
- 200 watts of roof mounted solar – standard

*Financing figured with 15% down plus tax, title and license WAC for 120 Months at 8.49% **Financing figured with 15% down plus tax, title and license WAC for 144 Months (Some inventory over \$50,000 may qualify for 240 months) at 8.49%

Financing figured with 15% down plus tax, title and license WAC for 180 Months at 8.49%. *Financing figured with 15% down plus tax, title and license WAC for 240 Months at 8.49%. See your sales associates for more details*

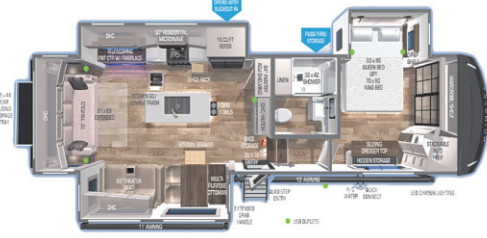
2024 Brinkley Model Z



Brinkley 2900

11,674 lbs.

\$88,999 ****\$632
per month



Brinkley 3100

11,927 lbs.

\$89,999 ****\$639
per month



Brinkley 3110

12,146 lbs.

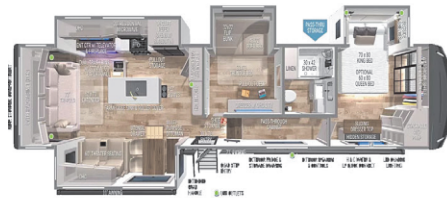
\$89,999 ****\$639
per month



Brinkley 3400

13,698 lbs.

\$99,999 ****\$710
per month



Brinkley 3610

14,695 lbs.

\$99,999 ****\$710
per month



Brinkley

Advantages over the Competition

- Mid-high profile - Industry First (79'6" Bedroom Height)
- Azdel exterior walls
- Alpha bond mylar seal on all seams - No caulk to seal
- Skirting metal is riveted vs screws - Best finish in the market
- Maintenance free roof
 - Industrial gasket seals (same as what is used in houses in Florida)
 - Additional MS polymer for peace of mind
 - 25-year warranty on roof membrane
- 370 watts of **standard** roof solar
 - 50a MPPT Charge controller
 - Inverter prep with whole coach inversion
- 17.5" h-rated cooper tires with custom rim
- TPMS system with 2.5" screen is **standard**
- 7k axles w/road defense powder coating
- Self-adjusting brakes
- MORryde cre 3000 w/1/2" shackle brackets, bronze bushing and greaseable zirks
- 75gal fresh tank capacity, true 90gal grey and 45gal black
- Electric dump valves w/clear termination tank cover
- Motion sensing under mounted lighting
- 65' retractable water hose reel
- Brass water fittings vs plastic
- Tankless on-demand water heater
- "Junk in the trunk" insulated and heated 48x40x15 rear storage
- Upgraded rear receiver w/ 3000lb towing cap and 300lb carrying cap
- Residential interior that is staple and putty free
 - Integrated window screen and insulated blackout blinds
- 16 CuFt 12v fridge with full access when slide out is closed
- Flush-floor main level slide out rooms
- Cabinet ducted heating w/thermaflox heat ducts that won't kink or tear
- Water shut-off valves at all fixtures

2024 Brinkley Model G available to order



Brinkley 3250

\$179,999 *\$1278
per month



Brinkley 3500

16,967 lbs.

\$169,999 *\$1207
per month



Brinkley 4000

17,674 lbs.

\$179,999 *\$1278
per month



Brinkley 3950

18,700 lbs.

\$189,999 *\$1349
per month

*Financing figured with 15% down plus tax, title and license WAC for 120 Months at 7.99% **Financing figured with 15% down plus tax, title and license WAC for 144 Months (Some inventory over \$50,000 may qualify for 240 months) at 8.49%
Financing figured with 15% down plus tax, title and license WAC for 180 Months at 8.49%. *Financing figured with 15% down plus tax, title and license WAC for 240 Months at 8.49%. See your sales associates for more details*

NOW IS THE TIME

to service your RV

Did you know?

Manufacturers recommend:

- 1) Preventative sealing all windows, doors and extrusions on your RV every 6-12 months?
- 2) Wheel bearings and brakes adjusted once a year or 12,000 miles Adding grease to the buddy bearings is not the same and typically customers will add too much causing problems.
- 3) Clean and condition your rubber roof at least once a year.

Servicing your RV on a regular maintenance schedule is necessary to ensure its safety and reliability

X Based on Tandem Axle

PREFERRED		VALUE		BASIC		ECONOMY	
Wheel/Hub Maintenance \$410 Pack wheel bearings & replace axle seals Inspect & adjust brakes & Inspect Suspension Check tire wear & inflation Torque wheel lug nuts Dlx. Exterior Roof Maintenance Rubber roof clean & wash \$1100 Condition rubber roof including slideout rooms <u>Seal Roof seals/seams (R&R roof tape excluded)</u> (may need to stay overnight for sealant to setup) Exterior Seal Package \$1250 Reseal exterior trim & moldings (no roof) Reseal windows, doors, compartments Reseal belt rails and running lights Slide out Maintenance \$405 Inspect slide out seals & spray with conditioner All exposed slide out gear lubed Inspect slide out adjustment House Battery Check \$99 Check fluid levels & Test Battery Cleaning of battery cables, posts & battery top Water Heater inspection \$149 Clean & adjust burner Clean Pilot Orifice & burner tube Adjust air flow to insure proper operation	LP Furnace inspection \$299/ea. Clean & inspect burner Clean & inspect orifice/ignitor Check for proper LP pressure & adjust as needed Perform a carbon monoxide & LP test Refrigerator inspection (non resid) \$199 Check operation on 110V, 12V, & LP Inspect refrigeration ventilation Clean & adjust burner & orifice LP test (takes 2 days for maintenance) Roof Air inspection \$249/ea. Amp draw test & Clean Filter Inspect air flow & tighten installation bolts Oven & Range Inspection \$149 Check & clean manifold & burner Clean & adjust pilot light Clean & adjust LP pressure & air flow for efficiency LP test Zero slides Retail \$3224 YOUR COST \$2999 With slide out Retail \$4309 YOUR COST \$4099 3 or more slide outs Retail \$5534 YOUR COST \$5199	Wheel/Hub Maintenance \$410 Pack wheel bearings & replace axle seals Inspect & adjust brakes Inspect suspension Check tire wear & inflation Torque wheel lug nuts Dlx. Ext. Roof Maintenance \$1100 Rubber roof clean & wash Condition rubber roof including slideout rooms <u>Seal Roof seals/seams (R&R roof tape excluded)</u> (may need to stay overnight for sealant to setup) Exterior Seal Package \$1250 Reseal exterior trim & moldings (no roof) Reseal windows, doors, compartments Reseal belt rails and running lights Zero slides Retail \$2080 YOUR COST \$1849 With slide out Retail \$2760 YOUR COST \$2499 3 or more slide outs Retail \$3585 YOUR COST \$3199	Wheel/Hub Maintenance \$410 Pack wheel bearings & replace axle seals Inspect & adjust brakes Inspect suspension Check tire wear & inflation Torque wheel lug nuts Dlx. Ext. Roof Maintenance \$1100 Rubber roof clean & wash Condition rubber roof including slideout rooms <u>Seal Roof seals/seams (R&R roof tape excluded)</u> (may need to stay overnight for sealant to setup) Zero slides Retail \$1305 YOUR COST \$1149 With slide out Retail \$1510 YOUR COST \$1349 3 or more slide outs Retail \$1635 YOUR COST \$1499	Wheel/Hub Maintenance \$410 Pack wheel bearings & replace axle seals Inspect & adjust brakes Inspect suspension Check tire wear & inflation Torque wheel lug nuts Basic Ext. Roof Maint. \$290 Rubber roof clean & wash Condition rubber roof including slideout rooms Inspect Roof seals and seams Zero slides Retail \$650 YOUR COST \$549 With slide out Retail \$700 YOUR COST \$599 3 or more slide outs Retail \$755 YOUR COST \$649			

Protective
Asset Protection

Today's Towable Average Repair Costs



Protect yourself from the unexpected. Ask your dealership representative about an XtraRide Service Contract today!



If your unit is
less than 13 years old,
 you may be eligible for service contract.
 Call Kelly, our business manager, for more details.

COUPON

\$200 OFF

on any Preowned Service

Contracts Exp. on May 31st, 2024

Revised
4/19/2024

PREMIER RV
LLC

746 Industrial Drive
Blue Grass, IA 52726
(563) 424-7788
premierrv.com

**2021 Jayco Whitehawk
27RB**



Was
\$34,995
Blowout
\$29,991

**2021 Flagstaff
25BSDS**



Was
\$31,950
Blowout
\$27,991

**2017 Cherokee Grey Wolf
27RR toy hauler**



Was
\$18,995
Blowout
\$12,991

**2017 Hideout
315RDTS fifth wheel**



Was
\$33,595
Blowout
\$27,991

Travel Trailers

Stock#	Layout	Sleep	Ext.	Slide	Year	Model	Bed	Air	Awning	UVW	Status	Price	Super Value
2176	TD	2	FIB	0	2018	Intech Luna	QI	1	none	1,800	as-is	\$15,995	
1954	RB	4	FIB	1	2022	Ember Overland 171FB	MB	1	electric	4,165	90 day	\$25,995	
1870	RK	4	FIB	1	2018	KZ Escape Mini M181RK	CQ	1	electric	3,020	as-is	\$18,895	\$12,991
2061	RB	4	AL	0	2017	Forest River Wildwood X-Lite FSX 186RB	QB	1	electric	3,193	as-is	\$11,990	
1736	RB	4	FIB	0	2022	Forest River Flagstaff E Pro E19FD	MB	1	electric	3,294	90 day	\$24,995	\$19,991
1903	BH	6	FIB	1	2022	Forest River R-Pod 193	CQ	1	electric	3,766	90 Day	\$21,995	\$19,991
2022	RB	2	FIB	1	2020	Keystone Passport Express 199ML	MB	1	electric	4,300	90 day	\$18,995	
2154	RK	4	FIB	4	2019	Forest River Rockwood Geo Pro G19FBS	CQ	4	electric	3171	90 day	Mar 21st	
2131	BH	6	FIB	1	2019	Dutchmen Coleman Light 2155BH	MB	1	electric	4806	90 day	\$15,995	
2010	RB	2	FIB	1	2023	Starcraft Super Lite 225CK	QI	1	electric	5,090	90 day	\$27,595	
1833	RL	4	FIB	1	2019	Cherokee Alpha Wolf 23RD-L	QI	1	electric	5,448	as-is	\$25,995	\$22,991
1937	BH	7-8	FIB	1	2003	Aero Lite Cub C236	Q	1	manual	3,720	as-is	\$4,995	
2107	RL	6	FIB	1	2022	Venture Sonic 231VRL	QI	1	electric	4,490	90 day	\$24,995	
1944	RB	6	FIB	1	2013	Jayco Jay Feather 24T	QI	1	electric	4,634	as-is	\$13,995	
2172	RB	1	AL	1	2022	Keystone Hideout 243RB	QI	1	electric	5,950	90 day	\$22,995	
1545	RB	4	FIB	1	2021	Forest River Micro Lite 25BSDS	QI	1	electric	5,894	90 day	\$31,950	\$27,991
2148	RD	6	FIB	2	2019	Venture RV Sporttrek 252VRD	QI	1	electric	6120	90 day	\$20,795	
1622	RB	6	FIB	2	2017	Keystone Bullet Premier 26RBPR	QI	1	electric	5,930	as-is	\$24,995	\$19,991
1773	RL	6	FIB	1	2018	Keystone Bullet 269RLS	QI	1	electric	5,360	as-is	\$25,995	\$22,991
1958	BH	10	FIB	1	2023	Starcraft Autumn Ridge 26BHS	QI	1	electric	4,710	90 day	\$23,991	
2135	RB	6	FIB	2	2021	Keystone Bullet Premier 26RBPR	QI	1	electric	6470	90 day	\$27,995	
2186	RB	?	FIB	1	2021	Grand Design Imagine 2600RB	QI	1	electric	6,141	90 day	\$26,995	
1534	RB	4	FIB	1	2021	Jayco Whitehawk 27RB	QI	1	electric	7,095	90 day	\$34,995	\$29,991
2196	BH	10	AL	1	2014	Dutchmen Aspen Trail 2810BHS	QI	1	electric	?	as-is	May 1st	
2093	RK	4	FIB	2	2017	Forest River Flagstaff SL 29RKWS	QI	1	electric	6337	as-is	\$19,995	
2142	RK	6	AL	1	2018	KZ Sportsmen 291RKLE	QI	1	electric	6,290	as-is	\$20,995	
2183	RL	4	AL	2	2018	Jayco Jay Flight 29RLDS	QI	1	electric	7,029	as-is	\$18,795	
2185	RE	?	FIB	2	2019	Dutchmen Kodiak 291RESL	QI	?	electric	6,820	as-is	\$27,995	
2197	RK	?	FIB	2	2020	Ja co White Hawk 32KBS	QI	?	electric	?	90 day	May 1st	
1930	RK	4	FIB	2	2018	Keystone Cougar Half Ton 33MLS	QI	2	electric	8,040	as-is	\$29,995	\$26,991
2159	RK	4	FIB	2	2018	Keystone Cougar Half Ton 33MLS	QI	?	electric	8,020	as-is	\$27,995	

Fold Downs

Stock#	Sleep	Ext.	Slide	Year	Model	Bed	Air	Awning	UVW	Status	Price	Super Value
--------	-------	------	-------	------	-------	-----	-----	--------	-----	--------	-------	-------------

Toy Hauler Fifth Wheels

Stock#	Garage	Sleep	Ext.	Slide	Year	Model	Bed	Air	Awning	UVW	Status	Price	Super Value
1902	14	4	AL	0	2020	Forest River Grey Wolf 25RRT	QI	1	electric	5204	90 day	\$21,995	\$19,991
1694	11	6	AL	1	2017	Forest River Cherokee Grey Wolf 27RR	QI	1	electric	5706	as-is	\$18,995	\$12,991

Toy Hauler Fifth Wheels

Stock#	Garage	Sleep	Ext.	Slide	Year	Model	Bed	Air	Awning	UVW	Status	Price	Super Value
2111	10'	8	FIB	2	2010	Keystone Raptor 300MP	QI	1	electric	11140	as-is	\$17,875	
1866	12	9	FIB	3	2019	KZ Venom 4012TK	QI	3	electric	14900	90 day	\$72,995	\$69,991

Fifth Wheels

Stock#	Layout	Sleep	Ext.	Slide	Year	Model	Bed	Air	Awning	UVW	Status	Price	Super Value
1966	RL	?	FIB	3	2016	Keystone Sprinter 298FWRLS	QI	2	electric	9,800	as-is	\$27,590	
1764	RE	6	FIB	3	2017	Keystone Hideout 315RDTS	QI	1	electric	9,470	as-is	\$33,595	\$27,991
1929	RL	4	FIB	3	2019	Keystone Montana 3120RL	QI	2	electric	12,050	90 day	\$49,995	
1876	RE	4	FIB	3	2013	Heartland Sundance 3270RES	QI	1	electric	10,616	as-is	\$19,995	\$18,991
2032	RL	4	FIB	3	2017	Coachmen Brookstone 325RL	QI	2	electric	12,302	as-is	\$42,995	
2199	RL	?	FIB	4	2013	Keystone Montana 3402RL	QI	?	electric	?	as-is	Apr 29th	
2143	RE	?	FIB	4	2012	Keystone Avalanche 330RE	QI	1	electric	11550	as-is	\$18,995	
1845	FL	6	FIB	6	2021	Forest River Sierra 379FLOK	KI	2	electric	13,235	90 day	\$61,995	\$49,991
2188	MB	7	FIB	4	2021	Grand Design Solitude 378MB	?	?	electric	?	90 day	May 7th	
2132	RL	5	FIB	5	2016	Forest River Sierra 387MKOK	QI	2	electric	13544	as-is	\$29,995	

Motorhomes

Stock#	Layout	Sleep	Ext.	Slide	Year	Model	Bed	Air	Awning	UVW	Status	Price	Super Value
2184	BH	10	FIB	1	2021	Jayco Grey Hawk 31F	QI	2	electric		90 day	\$88,995	

Layouts: RL=rear living , RE=rear entertainment, BH=bunk house, RK= rear kitchen, RB=rear bath, FL=front living , FK=front kitchen, TD=Teardrop, FB=Front Bath, HY=Hybrid
Bed: QI = queen island , KI - king island, CQ - corner queen , CD - corner double, QRS = queen rear slide, QFO = queen foldout, MB = Murphy Bed, HY=Hybrid

Disclaimer - all information and weights are approximate. Not responsible for errors in information, weights and pricing. See Salesperson for complete information.



**VALTERRA
TOILET TISSUE
BUY ONE GET ONE**

\$3.99

Reg. \$8.59

LIMIT 4 PER CUSTOMER



**PURE POWER HOLDING
TANK TREATMENT
BUY ONE GET ONE**

\$10.99

Reg. \$16.89



**RHINO EXTREME 20 FT
SEWER HOSE KIT
FREE TOILET PAPER W/PURCHASE**

\$73.99

Reg. \$112.99



**RHINO
TOTE TANKS
STARTING AT**

\$189.99

Reg. \$259.99



**FURRIION REAR CAMERA W/ 5IN
MONITOR - ASK ABOUT FREE
SIDE CAMERA'S W/PURCHASE**

\$599.99

Reg. \$676.39



**40% OFF
CAMCO ROOF
VENT COVERS**

\$29.99EA

Reg. \$49.99



**LIPPERT 12'X12'
POP-UP GAZEBO
W/WIND PANELS**

\$359.99

Reg. \$469.99

**30%
OFF**

**One in stock
part/accessory!***

*excludes sale items, special order
or work order parts.

Valid May 2-4, 2024 only.

1 coupon per customer.